

Extreme 1600 Bib Pants - Grundéns

- Amazing durability, flexible at low temps (-30°F).
- Resistant to oils & grease.
- These bibs are cut much higher up the chest.
- Double layer of material at top of bib/below knees.
- Triple layer of material at top of bib/below waist, if torn, fabric underneath is unaffected.
- Adjustable suspenders.
- Hem is reinforced with heavy nylon webbing.

Color: Orange
 Stock # Sizes
 GRU1600XS-XXXL



Extreme 4000 Parka

- Revolutionary hood offers very best face protection to meet the elements head-on.
- Cordlocks can be adjusted even with gloves.
 - Attached face-flap stows neatly beside hood.
 - Enlarged hood works with baseball cap or hard hat.
 - Full cape sleeve for unrestricted movement.
 - Double secure storm flap and reinforced cuffs.

Color: Orange
 Stock # Sizes
 GRU4000XS thru XXXL



Grundén Extreme

Fabric is made from a heavy cotton twill base material (4.7 oz. per yard), coated with a specially formulated PVC for a total weight of 15.6 oz. per yard.

Brigg 40 Parka

Heavy cotton twill coated with special PVC that resists oils to remain flexible in extreme cold.

- Full box shoulders & full cape sleeves.
- Double secure storm flap, chin strap.
- Attached hood with draw cord - Reinforced cuffs.

Color: Orange or Green.
 Stock # Sizes
 GRUBRIGG40.....XS-5XL
 GRUBRIGG40.....Tall M-3X



Grundéns Brigg

The Brigg is made from a heavy cotton twill base material (4.7 oz. per yard) and coated with a specially formulated PCV for a total weight of 15.6 oz. per yard..

Brigg 38 Pullover

Excellent for net fishermen, no snaps to snag on net. Heavy cotton twill, coated with special PVC, that resists oils and remains flexible in extreme cold.

- Full box shoulders & tapered sleeves.
- Neck gusset, tab closure - Attached hood with draw cord.
- Soft inner collar & reinforced cuffs.

Color: Orange or Green.
 Stock # Sizes Color
 GRUBRIGG38.....X-Small - 3XL



Brigg 44 Parka - Grundéns

Full cape sleeves.
 Attached hood with draw cords.
 • Double secure storm flap.
 • Reinforced built-in neoprene cuffs.
 Sizes: XS, S, M, L, XL, 2X, 3X, 4X, 5X.
 Tall Size: M, L, XL, 2X.
 Color: Green, Orange

Stock # Description
 GRUBRIGG44.....Parka Neoprene



Brigg 34 Pullover

Excellent for net fishermen, no snaps to snag on net. Heavy cotton twill, coated with special PVC, that resists oils and remains flexible in extreme cold.

- Full box shoulders & tapered sleeves.
- Neck gusset, tab closure - Attached hood with draw cord.
- Built-in neoprene reinforced cuffs.

Sizes: S, M, L, XL, 2X, 3X.
 Color: Green
 Stock # Description
 GRUBRIGG34.....Anorack with Neoprene Cuff



Brigg 41 Jacket

Full cape sleeve design for unrestricted movement.
 • Corduroy-lined collar & reinforced cuffs.
 • Snap-on hood is available as separate item: Brigg #42
 Sizes: XS, S, M, L, XL, 2X, 3X, 4X, 5X.
 Color: Green, Orange

Stock # Description
 GRUBRIGG41.....Jacket No Hood



Grundens's Clipper

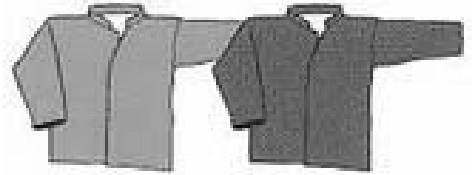
The fabric is a cotton twill base material coated with a specially formulated PVC for a total weight of 13.2 oz. per yard.. The PVC coating is the original Grundens's recipe that resists oil and remains flexible in extreme cold.



Clipper 82 Hooded Jacket

- Double secure storm flap.
 - Attached hood w/draw cords.
 - Covered snaps - Set-in sleeve design.
- Sizes: XS thru 5XL.
Colors: Orange, Green, White, Yellow.

Stock # Sizes
GRUCLIP82



Clipper 81 Jacket - Grundens

Same as Clipper 82 but without a hood.
Available in sizes XS thru 3XL in Orange or Green.

Stock # Description
GRUCLIP81Jacket No Hood Org

Clipper 116 Bib

- Reversible with a trimmer fit than Herkules
- Bibs have no waist gusset, instead they are cut much higher up the chest.
 - Adjustable suspenders, speed-clip type.
- Sizes: XS thru 5XL.
Colors: Orange, Green, White, Yellow.

Stock # Sizes
GRUCLIP116.....S thru 5XL



Clipper 50 3/4 Length Jacket - Grundens

- Built-in neoprene cuffs, keep water out.
 - Double secure storm flap.
 - Covered snaps - Attached hood.
 - Cape sleeve design, free movement.
- Color: Green.

Stock # Sizes
GRUCLIP50S-4XL



Clothing





Petrus 82 Parka

- Double secure storm flap - Attached hood.
- Covered snaps - Set in sleeve design.

Sizes: XS - 5XL

Color: Yellow, Green, Orange, White

Stock #	Size
GRUPET82	XS thru 5XL

Grundéns Petrus

The Petrus is a knitted polyester base material laminated to a PVC polyurethane layer. The strength to weight ratio of this fabric is remarkable, an entire set weighs just 2 pounds.



Petrus 800 Hooded Jacket

- Full-cut hood rolls up into collar.
- Double secure front closure with zipper & velcro.
- Velcro adjustable cuffs - Deep side pockets.

Color: Green, and Navy. Sizes: XS - 3XL

Stock #	Description
GRUPET800	Jacket Hooded Petrus

Petrus 116 Bib Pant

- Reversible front/back - Instead of side gusset, they are cut much higher up the chest.
- Adjustable suspenders are speed-clip type.

Sizes: XS -5XL. Tall sizes M thru 3XL

Color: Yellow, Green, Orange, White

Stock #	Size
GRUPET116	XS thru 5XL



Petrus 801 Waist Pant - Grundéns

Same material as Petrus 800 Jacket.

Features:

- Full cut legs for easy on/off or over boots.
- Elastic waist & drawcord.

Color: Green, Navy, Orange. Sizes: XS - 3XL

Stock #	Description
GRUPET801	Pant Petrus Waist Style



Grundéns Nordan

The Nordan has a knitted nylon base material laminated to a PVC layer. The result is a lightweight, soft, flexible, 100% waterproof material that offers reasonably good durability.



Water-Proof Shirt - Grundéns

Water-proof with neoprene cuffs. Breast pocket and attached hood.

Size: XS-3X

Color: Yellow with Navy or Red with Navy.

Stock #	Description
GRUP762	Water Proof Shirt

Nordan 82 Hooded Parka

Attached hood - Set in sleeve - Snap front.

Light duty raingear.

Sizes: XS - 4XL

Color: Orange, Green.

Stock #	Size
GRUNORD82	XS thru 4XL



Foulweather Gear Repair-Kit

Only one that works! We use Aqua Seal adhesive. Nothing else comes close.

- 2 Grundens fabric swatches.
- One 1 oz. tube, amazing liquid urethane: sets up even-in-water.
- Instructions enclosed in package.

Stock #	Description
GRUREPAIRKIT0	Repair Kit



Nordan 28 Bib Pant

High-cut bib - Wide legs - Elastic suspenders.

Sizes: XS - 4XL

Light duty raingear.

Color: Orange, Green.

Stock #	Size
GRUNORD28	XS thru 4XL



Grundéns Harvester

For professionals who prefer a woven synthetic base fabric. Abrasion and tear resistant, the Harvester fits your needs. A woven polyester base fabric with PVC applied to both sides. This heavy duty fabric is strong, long wearing and mildew resistant.



Harvester 17 Bib Pant - Grundéns

Features:

- Inside pocket - No vertical chest seam.
- Hems are reinforced with heavy-duty nylon webbing.
- Double reinforced front section for longer wear.
- Triple reinforced knee with pocket for foam kneepads. Speed clip suspenders. Tall- M-2X
- Sizes: XS - 5X. Color: Orange

Stock #	Description
GRUH17	Pant Bib Harvester



Harvester 40 Hooded Jacket

Features:

- Attached hood with draw cord - Chin strap.
- Full cape sleeve for unrestricted movement.
- Double secure storm flap and reinforced cuffs.

Sizes: XS - 5X
Color: Orange or Green.

Stock #	Description
GRUH40	Jacket Hooded Harvester



Harvester 44 Jacket

Features:

- Same as Harvester 40 except with built-in neoprene cuffs.
 - Snug dry fit around wrists.
- Sizes: XS - 5X
Color: Orange or Green.

Stock #	Description
GRUH44	Jacket Harvester Cuff



Grundéns Herkules

The Herkules is made from a heavy cotton canvas base material (7.7 oz. per yard) coated with a special formulated PVC (10.3 oz. per yard) for a total weight of 18 oz. per yard. The PVC coating is specially designed to resist oils and to maintain flexibility in extremely cold temperatures.



Herkules #16 Bibs

Heaviest cotton backing for heavy commercial use. Special PVC that resists oils and remains flexible in extreme cold.

- Reversible front to back.
 - Reinforced hems with riveted seams.
 - Side gusset to adjust width.
- Sizes: XS-5XL
Color: Orange or Green.

Stock #	Description
GRUHERK16	Standard Bibs
GRUHERK16T	Tall size, Med. - 3X



Clothing

Mariner / Cannery Rain Gear
 0.40mm PVC w/Polyester backing treated,
 to remain pliable in the cold.



Mariner Jacket & Bibs Set

Jacket features:

- Double storm flap with concealed snaps.
- Adjustable hood with drawcords.

Bib Pant features:

- Heavy duty key-in suspenders.
- Concealed side snap adjustment.
- Pant & jacket seams are all double welded for added durability.

Sizes: S - 3XL

Mariner Rainsuit - Tahshin

Stock #	Description	Color	Size
TAH10510BS.....	Rainsuit Mariner	Blue	Sm
TAH10510BM.....	Rainsuit Mariner	Blue	Med
TAH10510BL.....	Rainsuit Mariner	Blue	Lrg
TAH10510BXL.....	Rainsuit Mariner	Blue	XL
TAH10510BXXL...	Rainsuit Mariner	Blue	XXL
TAH10510BXXXL	Rainsuit Mariner	Blue	XXXL

TAH10510GS.....	Rainsuit Mariner	Green	Sm
TAH10510GM.....	Rainsuit Mariner	Green	Med
TAH10510GL.....	Rainsuit Mariner	Green	Lrg
TAH10510GXL.....	Rainsuit Mariner	Green	XL
TAH10510GXXL...	Rainsuit Mariner	Green	XXL
TAH10510G3XL....	Rainsuit Mariner	Green	3XL

TAH10510YS.....	Rainsuit Mariner	Yellow	Sm
TAH10510YM.....	Rainsuit Mariner	Yellow	Med
TAH10510YL.....	Rainsuit Mariner	Yellow	Lrg
TAH10510YXL.....	Rainsuit Mariner	Yellow	XL
TAH10510YXXL...	Rainsuit Mariner	Yellow	XXL
TAH10510YXXXL	Rainsuit Mariner	Yellow	3XL



Mariner Hooded Jacket

Jacket features:

- Double storm flap with concealed snaps.
- Adjustable hood with drawcords.

Sizes: S - 3XL

Stock #	Description	Color	Size
TAH10540GS.....	Jacket Hooded	Green	Sm
TAH10540GM.....	Jacket Hooded	Green	Med
TAH10540GL.....	Jacket Hooded	Green	Lrg
TAH10540GXL.....	Jacket Hooded	Green	XL
TAH10540GXXL...	Jacket Hooded	Green	XXL
TAH10540G3XL....	Jacket Hooded	Green	3XL

TAH10540YS.....	Jacket Hooded	Yellow	Sm
TAH10540YM.....	Jacket Hooded	Yellow	Med
TAH10540YL.....	Jacket Hooded	Yellow	Lrg
TAH10540YXL.....	Jacket Hooded	Yellow	XL
TAH10540YXXL...	Jacket Hooded	Yellow	XXL
TAH10540YXXXL	Jacket Hooded	Yellow	3XL

Mariner Bib Pant

Pant features:

- Heavy duty key-in suspenders.
- Concealed side snap adjustment.

Stock #	Description	Color	Size
TAH10570GS.....	Pant Bib	Green	Sm
TAH10570GM.....	Pant Bib	Green	Med
TAH10570GL.....	Pant Bib	Green	Lrg
TAH10570GXL.....	Pant Bib	Green	XL
TAH10570GXXL...	Pant Bib	Green	XXL
TAH10570G3XL....	Pant Bib	Green	3XL

TAH10570YS.....	Pant Bib	Yellow	Sm
TAH10570YM.....	Pant Bib	Yellow	Med
TAH10570YL.....	Pant Bib	Yellow	Lrg
TAH10570YXL.....	Pant Bib	Yellow	XL
TAH10570YXXL...	Pant Bib	Yellow	XXL
TAH10570YXXXL	Pant Bib	Yellow	3XL



Sparhawk - Tahshin

0.55mm PVC with cotton backing, treated to remain pliable in the cold.



Sparhawk Parka

Features:

- Seams are all double welded for added durability.
- Double storm flap with non-corrosive metal snaps.
- Attached hood with adjustable drawcords.
- Seamless double reinforced cuffs - Neoprene inner cuff.
- Sizes: S - 3XL

Stock #	Description	Color	Size
TAH11440GS.....	Jacket Sparhawk	Green	Sm
TAH11440GM	Jacket Sparhawk	Green	Med
TAH11440GL.....	Jacket Sparhawk	Green	Lrg
TAH11440GXL.....	Jacket Sparhawk	Green	XL
TAH11440GXXL...	Jacket Sparhawk	Green	2XL
TAH11440G3XL.....	Jacket Sparhawk	Green	3XL

TAH11440OS.....	Jacket Sparhawk	Orange	Sm
TAH11440OM	Jacket Sparhawk	Orange	Med
TAH11440OL.....	Jacket Sparhawk	Orange	Lrg
TAH11440OXL.....	Jacket Sparhawk	Orange	XL
TAH11440OXXL...	Jacket Sparhawk	Orange	2XL
TAH11440OXXXL	Jacket Sparhawk	Orange	3XL

TAH11440YS.....	Jacket Sparhawk	Yellow	Sm
TAH11440YM	Jacket Sparhawk	Yellow	Med
TAH11440YL.....	Jacket Sparhawk	Yellow	Lrg
TAH11440YXL.....	Jacket Sparhawk	Yellow	XL
TAH11440YXXL...	Jacket Sparhawk	Yellow	2XL
TAH11440Y3XL.....	Jacket Sparhawk	Yellow	3XL



Sparhawk Bib Pant

Features:

- Heavy-duty quick release suspenders.
- Seams are all double welded & stitched. PVC/cotton .55mm
- Seamless double ankle cuffs for durability.

Sizes: S - 3XL

Stock #	Description	Color	Size
TAH11470GS.....	Pant Bib Sparhawk	Green	Sm
TAH11470GM	Pant Bib Sparhawk	Green	Med
TAH11470GL.....	Pant Bib Sparhawk	Green	Lrg
TAH11470GXL.....	Pant Bib Sparhawk	Green	XL
TAH11470GXXL...	Pant Bib Sparhawk	Green	XXL
TAH11470G3XL.....	Pant Bib Sparhawk	Green	3XL

TAH11470S.....	Pant Bib Sparhawk	Orange	Sm
TAH11470M	Pant Bib Sparhawk	Orange	Med
TAH11470L	Pant Bib Sparhawk	Orange	Lrg
TAH11470XL.....	Pant Bib Sparhawk	Orange	XL
TAH11470XXL.....	Pant Bib Sparhawk	Orange	2XL
TAH11470XXXL...	Pant Bib Sparhawk	Orange	3XL

TAH11470YS.....	Pant Bib Sparhawk	Yellow	Sm
TAH11470YM	Pant Bib Sparhawk	Yellow	Med
TAH11470YL.....	Pant Bib Sparhawk	Yellow	Lrg
TAH11470YXL.....	Pant Bib Sparhawk	Yellow	XL
TAH11470YXXL...	Pant Bib Sparhawk	Yellow	2XL
TAH11470Y3XL.....	Pant Bib Sparhawk	Yellow	3XL



Aleutian Bib Pant

Our best commercial bib!

0.65mm PVC with cotton twill backing treated, remains pliable in the cold.

Features:

- Seams are all double welded & stitched.
- Heavy-duty quick release suspenders.
- Seamless double reinforced cuffs for durability.
- Identical front and back for even wear.
- Seamless double reinforced cuffs.

Sizes: S - 3XL

Color: Orange

Stock #	Description	Color	Size
TAH12470S	Pant Bib Aleutian	Orange	Sm
TAH12470M	Pant Bib Aleutian	Orange	Med
TAH12470L	Pant Bib Aleutian	Orange	Lrg
TAH12470XL	Pant Bib Aleutian	Orange	XL
TAH12470XXL.....	Pant Bib Aleutian	Orange	2XL
TAH12470XXXL...	Pant Bib Aleutian	Orange	3XL





Chief (CHF) Bib Trousers

- Outside layer PVC nylon/Rip-stop nylpeche fabric.
- Inside breast pocket - Triple-layer at knees.
- Inside knee pocket for adding knee pads.
- Heavy-duty suspenders with fixlock buckles.

Colors: Orange, Yellow, Dark Green.

Stock #	Sizes
GUYBIB	S thru XXL



SouWester

0.48mm PVC polyester backing.

Features:

- Soft cotton blend lining.
- Welded seams.
- Ear flaps and adjustable drawcord.



Stock #	Description	Color	Size
TAH10880GMHat Souwester	Green	Med
TAH10880GLHat Souwester	Green	Lrg
TAH10880GXLHat Souwester	Green	XL
TAH10880YSHat Souwester	Yellow	Sm
TAH10880YMHat Souwester	Yellow	Med
TAH10880YLHat Souwester	Yellow	Lrg
TAH10880YXLHat Souwester	Yellow	XL

X-Trapper Bib Trousers

Top performance in protection.

Features:

- Double layer on whole front side.
- Outside layer Rip-stop PVC and nylon fabric; reinforced with nylpeche fabric - Comfortable.
- Back layer in PVC/jersey polyester fabric.
- Outside Triple layer on chest area.
- Triple-layer at knees.
- Inside knee pocket for knee pads.
- Reinforced low back-leg bottoms.
- Wide & comfy suspenders w/fixlock buckles.
- Velcro closure at bottom of leg to tighten around boots.

Color: Orange/Yellow or Blue/Yellow - Sizes: S-XXL

Stock #	Description
GUYXTRAPX-Traper Heavy Duty Bib



Sandhamn 21 Sou'wester

Nylon base fabric with PVC coating. 100% waterproof.

Features:

- Extra wide brim, neck protection & ear flaps.
- Welded water ditch on front brim, leads water away.
- Adjustable chin strap. Polyester flannel lined.

Colors: Orange, Green, Black, & Yellow.

Stock #	Size
GRUS21	S-XL



Kids / Zenith #294
Children's bib style pants. PVC over nylon. Reflective stripes. Bottom of pants have stirrup to keep pants over boots.

Stock #	Description	Color	Size
GRUZEN294B2Bib Pant Child	Navy	Sz 2 Yr
GRUZEN294B4Bib Pant Child	Navy	Sz 4 Yr
GRUZEN294B6Bib Pant Child	Navy	Sz 6 Yr
GRUZEN294O2Bib Pant Child	Orange	Sz 2 Yr
GRUZEN294O4Bib Pant Child	Orange	Sz 4 Yr
GRUZEN294O6Bib Pant Child	Orange	Sz 6 Yr
GRUZEN294O8Bib Pant Child	Orange	Sz 8 Yr
GRUZEN294Y2Bib Pant Child	Yellow	Sz 2 Yr
GRUZEN294Y4Bib Pant Child	Yellow	Sz 4 Yr
GRUZEN294Y6Bib Pant Child	Yellow	Sz 6 Yr
GRUZEN294Y8Bib Pant Child	Yellow	Sz 8 Yr

Kids!

Kids / Zenith #293
Children's jacket. PVC over nylon. Hooded with chrome snaps. Reflective stripes.

Stock #	Description	Color	Size
GRUZEN293B2Jacket Child	Navy	Sz 2 Yr
GRUZEN293B4Jacket Child	Navy	Sz 4 Yr
GRUZEN293B6Jacket Child	Navy	Sz 6 Yr
GRUZEN293O2Jacket Child	Orange	Sz 2 Yr
GRUZEN293O4Jacket Child	Orange	Sz 4 Yr
GRUZEN293O6Jacket Child	Orange	Sz 6 Yr
GRUZEN293O8Jacket Child	Orange	Sz 8 Yr
GRUZEN293Y2Jacket Child	Yellow	Sz 2 Yr
GRUZEN293Y4Jacket Child	Yellow	Sz 4 Yr
GRUZEN293Y6Jacket Child	Yellow	Sz 6 Yr
GRUZEN293Y8Jacket Child	Yellow	Sz 8 Yr





Neptune One Piece Suit

Rugged, light-weight, suit weighs less than heavy-duty bib pant.

- Strong PVC/Nylon fabric front.
- Abrasion resistant.
- Back is soft polyurethane, strong for stretch and comfort.

Features: Built-in neoprene cuffs
Velcro ankle closures - 35 Lbs.

Colors: Orange/ Yellow

Stock #	Sizes
GRUNEP5020.....	XS-4XL

Inshore One-Piece - ProRainer

Lamination: PVC - Shell: Oxford nylon.
Lining nylon taffeta - Seams 100% fully taped.

Features:

- Interior adjustable suspenders.
- Chest high fleece lined pockets.
- 13" Leg zipper with gusset.
- Interior PU/Tricot cuff closure.
- Reinforced seat and knee patches.
- Large form fitting hood with draw cord.

Sizes: XS-2XL

Color: Red/Navy or Grn/Navy.

Stock #	Description	Size
TAH606GXS.....	Skiff Suit Seagreen/Navy.....	XS
TAH606GS	Skiff Suit Seagreen/Navy	Sm
TAH606GM	Skiff Suit Seagreen/Navy	Med
TAH606GL	Skiff Suit Seagreen/Navy	Lrg
TAH606GXL.....	Skiff Suit Seagreen/Navy	XL
TAH606GXXL.....	Skiff Suit Seagreen/Navy	XXL



TAH606XS	Skiff Suit Red/Navy	XS
TAH606S	Skiff Suit Red/Navy	Sm
TAH606M	Skiff Suit Red/Navy	Med
TAH606L	Skiff Suit Red/Navy	Lrg
TAH606XL	Skiff Suit Red/Navy	XLrg
TAH606XXL.....	Skiff Suit Red/Navy	XXL



Compact, Packable Raingear

Weather Watch Hooded Pullover

The most durable packable raingear available today. Waterproof and breathable. Adjustable hood with easy access drawcords. Two secure zipper handwarmer pockets and two inside deep secure pockets. Hi-Viz yellow.

Stock#	Description
GRUWWPYXS	Packable Rain Jacket.....XS
GRUWWPYXS	Packable Rain Jacket.....Sm
GRUWWPYM.....	Packable Rain Jacket.....Med
GRUWWPYL.....	Packable Rain Jacket.....Lrg
GRUWWPYXL.....	Packable Rain Jacket.....XL
GRUWWPY2X.....	Packable Rain Jacket.....XXL
GRUWWPY3X.....	Packable Rain Jacket.....XXXL



Grundens Weather Watch Pant

The most durable packable raingear available today, it will roll up into a tight bundle in a pack or duffel, but be there when you need it to repel a driving rain.

Comfortable fitting waist pant with 1-1/2" wide elastic belt, two secure zipper handwarmer pockets, one thigh cargo pocket. Bottom leg zippers to ease putting on over shoes or boots. Waterproof and breathable. Black

Stock#	Description	Sizes
GRUWWTBXS	Packable Rain Pant	XS
GRUWWTBS	Packable Rain Pant	Sm
GRUWWTBM.....	Packable Rain Pant	Med
GRUWWTBL.....	Packable Rain Pant	Lrg
GRUWWTBXL.....	Packable Rain Pant	XL
GRUWWTB2X.....	Packable Rain Pant	XXL
GRUWWTB3X.....	Packable Rain Pant	XXXL



Weather Watch Hooded Jacket

The most durable packable raingear available today. Waterproof and breathable. Adjustable hood with easy access drawcords, adjustable waist cinch cords. Two secure zipper handwarmer pockets and two inside deep secure pockets. Please state color and size when ordering..

Stock#	Description	Sizes
GRUWWJB	Black Jacket	XS thru 3XL
GRUWWJG	Green Jacket	XS thru 3XL
GRUWWJN	Navy Jacket	XS thru 3XL
GRUWWJY	Yellow Jacket	XS thru 3XL



Clothing



Wristers / Sleeves

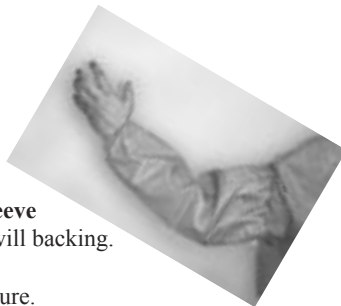
Aleutian Extra-Tough PVC/Cotton Sleeve

Extra-tough 0.55mm PVC with cotton twill backing.

- Economically priced, universal size.
- Neoprene cuff & adjustable velcro closure.

Color: Orange

Stock #	Description
TAH65N1Neoprene Cuff
TAH65N2Elastic Cuff



Heavy-Weight PVC/Cotton Sleeve

Sparhawk .45mm PVC with cotton backing with concealed elastic cuff.

Stock #	Size
TAHS045Universal White
TAHS045YUniversal Yellow



Nordan 22 Sleeves - Grundens

Knitted nylon with PVC coating.

- Lightweight, soft, & flexible.
- Elastic top & bottom.

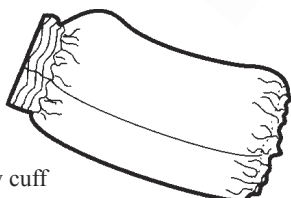
One size fits all. Color: White

Stock #
GRUNORD22



8 MIL Vinyl - Cannery Sleeve

Stock#	Description
EDM59-001	Vinyl - Blue
EDM59-012	Urethane with Yellow cuff



Clipper 25 Sleeves - Grundens

Cotton twill fabric with PVC coating.

- Elastic wrist
- Unique elastic/velcro adjustable top.

One size fits all. Color: Orange

Stock #
GRU25



Wrist-T-Cuff

Wristers: nylon-covered neoprene rubber.

Warm, helps prevent abrasion from net & raingear.

Stock #	Description	Size
GUDWR1Wrist Cuff	Small
GUDWR2Wrist Cuff	Medium
GUDWR3Wrist Cuff	Large
GUDWR4Wrist Cuff	XLarge



Clipper 26 Sleeves - Grundens

Cotton twill fabric with PVC coating of Grundens special formula.

- 4 inch-long neoprene cuff.
- Unique elastic/velcro adjusting top.

One size fits all. Color: Orange

Stock #
GRU26



Kool-Back Support Belt

Multiple layers of breathable, coated, reinforced mesh.

Strong, non-elastic fabric. Washable, durable & comfortable.

- Does not absorb moisture.
- Designed specifically for back support.
- Instantly conforms to body shape.
- Does not slip or curl.
- Breathable: Inhibits heat retention.

Waist Size Fits Belt Size:

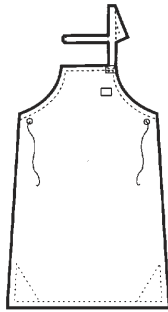
Waist:	22-28	28-34	34-40	40-46	46-50	50+
Belt:	S	M	L	XL	XXL	XXXL

Stock #	Size
TRC2112SSM
TRC2112MMD
TRC2112LLG
TRC2112XLXL
TRC2117XXLXXL
TRC2117XXXLXXXL

Heavy-weight Apron - Pro Rainier

.40 mm PVC/Polyester.
Reinforced belly patch. Heavy-duty.
Color: Yellow or White

Stock #	Size	Color
TAHA035	Universal	White
TAHA035Y	Universal	Yellow



Midweight PVC Apron

0.18mm PVC apron - Mid-weight.
Color: White or Yellow.

Stock #	Size	Color
TAHA040	Universal	White
TAHA040Y	Universal	Yellow



Edmont Apron

PVC aprons.

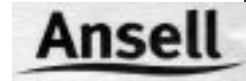
Stock #	Description
EDM56-009	6 mil, Blue
EDM56-012	12 mil, Clear, 12 pack
EDM56-015	6 mil, Blue, 12 pack
EDM56-101	20 mil, White
EDM56-230	1.5 mil, Blue, 100 pack

Urethane Apron

Urethane - Lightweight
Durable nylon backing -Long wear.

Color: Yellow or Blue.

Stock #	Description
EDM56-600	Urethane Yellow...35"x 45"
EDM56-601	Urethane Blue35"x 45"



Heavier Duty Aprons

Herkules Apron - Grundéns

Heavy cotton canvas base material.
Coated with PVC. Total weight 18 oz. per yard.
• PVC coating resists oils & remains flexible in extreme cold.
• Nylon webbing neck strap. Simple tie-back closure.
Color: Orange

Stock #
GRUAPRON



Endurosafe Apron

Enduro 2000, out performs traditional materials as neoprene, nitriles, vinyls etc.
• Stronger, wears longer.
• Very resistant to abrasion, chemicals & oil and fat corrosion.

Color: Yellow or White

Stock#	Size	Color
EDM56-800	35" x 45"	White
EDM56-801	35" x 45"	Yellow



Clipper Apron - Grundéns

Lighter-weight than the Herkules.
PVC/Cotton, 13.2 oz.
Color: White

Stock #
GRUCWAPRON

Neoprene Apron - Lacrosse

.57mm heavy duty neoprene.
• Exterior neoprene coating on cotton base fabric.
• Metal grommets.
• Reinforced corners.
Color: Yellow

Stock #	Description
LCF2700-2130	Apron Hd Neoprene 35 x 45



Processing Apron

Polyester backed vinyl fabric with adjustable webbed neck strap. Color: Navy.

Stock #	Description
LOKALN37	Apron 37"



Boffants

Polypropylene cap. Water repellent.

Stock #	Description	Pack
KST110NW119W	.19" White	1,000
KST110NW121W	.21" White	1,000
KST110NW124W	.24" White	1,000

Hair/Beard Nets

Necessary for Processing Facilities.

Beard Net

Used when processing food.

Stock #	Description
KST112HPBLK	Beard Net Black Hd 100/Pk
KST112HPI	Beard Net White Hd 100/Pk



Clothing



Thermal Undergarments

Polypropylene Tops and Bottoms

Rib-knit for maximum stretch & comfort.
Top: Long sleeved with taped shoulder seams. Self cuff and neckline trim.
Bottoms: fly front and self cuff at ankles. Covered elastic waistband.
 Colors: Navy

Stock#	Description	Sizes
KENP301	Crewneck	S-2X
KENP302	Pant	S-2X



Pants - Poly/Wool/Polypro

Combo: 2 tech fibers for maximum comfort/warmth. Inner layer is 100% polypropylene stays dry, wicks sweat to surface.
 Outer layer 80% polyester/20% wool.
 Color: Gray Heather

Stock#	Description	Sizes
KEN311	Crewneck	S-2X
KEN312	Pants	S-2X



MicroFleece Thermal Undergarments

Nuvola Microfleece Zip T-Neck

180-gm 100% spun polyester Nuvola microfleece.
 • Anti-piling. Wind flaps cover top zipper.
 • Lightweight, exceptionally soft brushed fabric.
 • Provides warmth with out weight or bulkiness.
 Black or Navy, S thru XL.

Stock #	Description
SKCS670	Turtle Neck



Nuvola Microfleece Pants

180-gm 100% spun polyester Nuvola microfleece.
 • Anti-piling. Wind flaps cover top zipper.
 • Midweight, exceptionally soft brushed fabric.
 • Provides warmth with out weight/ bulkiness.
 • Elastic waist with inside drawcord.
 • On-seam pockets and outside zip leg openings.
 Color: Black. Sizes: S thru XXL

Stock #	Description
SKCS662	Pant



Hudson MicroFleece Crewneck - Guy Cotten

Zip-neck top with collar. Medium-weight. Power dry microfleece. Rapidly moves sweat from skin to stay dry and comfortable. Special microbial treatment, ideal wear next to skin. Made in USA. Black.

Stock#	Description	Sizes
GUYHUDBLKS	Fleece Crewneck	Sm
GUYHUDBLKM	Fleece Crewneck	Med
GUYHUDBLKL	Fleece Crewneck	Lrg
GUYHUDBLKXL	Fleece Crewneck	XL
GUYHUDBLKXXL	Fleece Crewneck	XXL



Baffin MicroFleece Pant - Guy Cotten

Medium-weight - Power dry microfleece. Rapidly moves sweat from skin to stay dry, comfortable. Special microbial treatment, ideal wear next to skin. Elasticized waist. Double opening fly. Made in USA. Black

Stock#	Description	Sizes
GUYBAFBLKS	Fleece Pant	Sm
GUYBAFBLKM	Fleece Pant	Med
GUYBAFBLKL	Fleece Pant	Lrg
GUYBAFBLKXL	Fleece Pant	XL
GUYBAFBLKXXL	Fleece Pant	XXL



Fiske Skins Crew Top

Comfortable, easy-wearing crew neck top works well as a shirt of its own. Made from 100% polyester knitted fabric that wicks moisture away for quick drying. It has a peached finish on the inside for added comfort and is treated with silpüre for odor control. Color is black.

Stock#	Description	Sizes
GRU3540XS	Fiske Skins Top Xs	
GRU3540S	Fiske Skins Top Sm	
GRU3540M	Fiske Skins Top Md	
GRU3540L	Fiske Skins Top Lg	
GRU3540XL	Fiske Skins Top XL	
GRU3540XXL	Fiske Skins Top XXL	
GRU35403XL	Fiske Skins Top XXXL	



Fiske Skins Pant

Good fitting underwear with fly. Made from 100% polyester knitted fabric that wicks moisture away for quick drying. It has a peached finish on the inside for added comfort and is treated with silpüre for odor control. Color is black.

Stock#	Description	Sizes
GRU5540XS	Fiske Skins Bottoms Xs	
GRU5540S	Fiske Skins Bottoms Sm	
GRU5540M	Fiske Skins Bottoms Md	
GRU5540L	Fiske Skins Bottoms Lg	
GRU5540XL	Fiske Skins Bottoms Xl	
GRU55402XL	Fiske Skins Bottoms XXL	
GRU55403XL	Fiske Skins Bottoms XXXL	



Clothing

Reversitec Fleece w/Zip - Tahshin

4-way stretch 360gm microfleece combo of poly/spandex.

Great layer for outdoor activities.

Features:

- Warm & comfortable base-layer, not confining.
- Reversible, smooth side out for middle layer or fuzzy side out for underwear.
- T-Neck - Deep front zipper.
- Center back length: 26 1/2" (men's large). Sizes S thru XXL

Stock #	Description
TAH50445.....	T-Neck ZIP Reversitec FLC



Nublend Super Hooded Sweatshirt

8 Oz. Midweight, pill resistant fleece.

- Double lined hood & grommets/matching draw cord.
- Front pouch storage pocket. Seamless body.
- Durable ribbed cuffs. Set-in sleeves.

Colors: Navy or Black

Stock #	Description	Size
SWSAM.....	Sweatshirt Hooded PO 50/50 MD	
SWSAL.....	Sweatshirt Hooded PO 50/50 LG	
SWSAXL.....	Sweatshirt Hooded PO 50/50 XL	
SWSAXXL.....	Sweatshirt Hooded PO 50/50 XXL	
SWSAXXXL.....	Sweatshirt Hooded PO 50/50 XXXL	



Reversitec Pant - Tahshin

4-Way stretch fabric.

360gm micro-fleece combo of poly/spandex.

Great layer for outdoor activities.

Features:

- Warm & comfortable base-layer, not confining.
- Reversible, smooth side out for middle layer or fuzzy side out for underwear.

Color: Black Sizes S thru XXL

Stock #	Description
TAH50447.....	Pant Reversitec



Nublend Super Sweat Pant

8 Oz. Midweight, pill resistant fleece.

- Waistband reinforced w/spandex to retain shape.
- 2-needle cover seamed areas for added durability.
- Double napped fleece for more loft.
- Double-needle stitched covered elastic waistband.
- Elastic cuff at ankle. No side seams. Inside draw-cord.

Colors: Navy or Black. Sizes S thru XXL

Stock #	Description
SWPAS.....	Sweatpant 50/50 Asst Color Small
SWPAM.....	Sweatpant 50/50 Asst Color Med
SWPAL.....	Sweatpant 50/50 Asst Color Large
SWPAXL.....	Sweatpant 50/50 Asst Color X-Large
SWPAXXL.....	Sweatpant 50/50 Asst Color XX-Lrg



Fleece - Grundéns

Soft - Warm - Quick Drying

Use fleece anytime, soft, comfortable, easy to care for. 100% first quality, non-piling polyester fibers. Exceptionally warm for its weight.

Quick drying, ideal in damp environments.

Fabric & clothing: made in USA.

Sitka Fleece Pullover - Grundéns

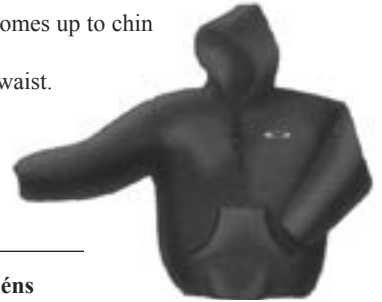
Full-cut hood, extra long zipper that comes up to chin to protect the throat.

- Pouch pocket. Lycra trim at cuffs & waist.

Colors: Black and Navy.

Sizes: S-3X

Stock #	Description
GRUFT18.....	Fleece Pullover



Wind-Buster Fleece Jacket - Grundéns

Helps you stay warm during wind-buffeting activities.

Laminated windblocking fleece. Breathable.

Attached hood with drawcord & cordlocks.

Front zipper closure. Hand-warming pockets.

Colors: Black with Gray lining.

Sizes: XS-5X.

Stock #	Description
GRUWP20.....	Fleece Jacket



Kachemak Vest - Grundéns

Layers comfortably over a shirt or under a jacket.

Inseam hand-warmer pockets.

Lycra trim at arm holes and waistband.

Sizes: XS-3X.

Colors: Black and Navy.

Stock #	Description
GRUFV17.....	Vest



Unimak Waist Pant - Grundéns

Well designed & built with deep front pocket.

Lycra trim at leg bottoms.

Grundén's exclusive "adjustable elastic belt".

Sizes: XS-5XL. Colors: Black and Navy.

Stock #	Description
GRUFP19.....	Pant



Wind Buster Pant - Grundéns

Laminated windblocking fleece.

Breathable.

Sizes: XS-5XL.

Stock #	Description
GRUWP19.....	Pant



Viking 400 Deluxe Waist Pant - Grundéns

Removable, articulating knee pads - Reinforced seat.

Deep pockets with zippered enclosures - Elastic web belt.

Sizes: XS-5XL.

Stock #	Description
GRUFPC400.....	Deluxe Pant



Clothing





Eureka 98 Fisherman's Pullover - Grundéns

Warm fleece pullover - Water proof on sleeves & below chest.

- Combo: Cotton twill & warm fleece.
- Full hood with draw cords & cordlocks.
- Neoprene cuffs for snug dry fit.

Sizes: S - 3X

Color: Navy fleece with green PVC.

Stock #	Description
GRULH98.....	Pullover with Hood



PT Mackey Waxed Pullover - Grundéns

Inspired by fishermen's and sailors of the past.

Traditionally worn over wool-sweater.

Waxed-cotten duck cloth.

Leather trim at stress points.

- Tough as nails, gains character with use.
- Do-not machine wash or dry-clean.
- Meant to be brushed /wiped.
- Large "cul-de-sac" pocket for tools.

Sizes: S - 3X

Sizes: S - 3X

Stock #	Description
GRUPTMACKEY....	Waxed Pullover
GRUWAX.....	Wax for Mackey



Westport 99 Jacket - Grundéns

Same as the Eureka except for full length zipper down the front.

Sizes: S - 3X

Color: Navy fleece with green PVC.

Stock #	Description
GRULH99.....	Jacket Westport Full Zip



Halso 760 Pullover Shirt - Grundéns

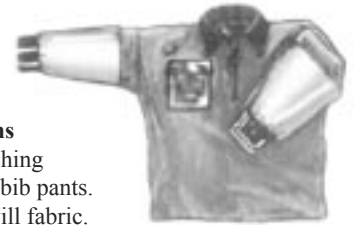
Utilizes a traditional Scandinavian fishing garment design. Typically worn with bib pants.

- Shirt body made of beaver nylon twill fabric.
- Sleeves of Urethane-coated, knitted polyester.
- Neoprene cuffs. Waterproof sleeves. Breast pocket.

Sizes: XS-3X

Colors: Navy Blue with orange sleeves

Stock #	Description
GRU760.....	Halso Shirt



Waterline 727 Jacket - Grundéns

Fleece with 100% waterproof sleeves of polyurethane petrus material that stretches, is light & comfortable.

- Full hood with draw cords & cordlocks.
- Waterproof sleeves with neoprene cuffs for snug dry fit.

Sizes: S - 2X

Stock #	Description
GRULL727R.....	Pullover Hooded Red/Grey



Petrus 760 Waterproof Shirt - Grundéns

Utilizes a traditional Scandinavian fishing garment design. Typically worn with bib pants.

Knitted polyester laminated to a PVC polyurethane layer. Strength to weight is remarkable.

Features:

- Neoprene cuffs. Waterproof sleeves. Breast pocket.

Sizes: S-5X

Colors: Navy Blue with Orange sleeves

Stock #	Description
GRUP760.....	Petrus Shirt





5 Pocket Parka - Tempest II

Features:

- Comfy fleece collar.
- Underarm vents - Fully adjustable hood.
- Generously sized for layering: XS - 4XL

Stock #	Colors	Sizes
NTI838CB	Char/Blue	XS-3XL
NTI838CG	Char/Green	XS-3XL
NTI838CR	Char/Red	XS-3XL
NTI838CY	Char/Yellow	XS-3XL

Stow your gear!



Eat Fish Duffel Bag

- Large main compartment has waterproof bottom.
- 2 separate zippered end compartments:
 - A. has an organizer.
 - B. waterproof internal bag for wet/dirty items.
- Sturdy handles on each end.
- Strap handles & a clip-on shoulder strap.

Stock #	Description
GRUBAG	Duffel Bag



Sakao Duffel Bag

Completely waterproof - heavy-duty zip.
Fastening under double-velcro flap.
Handles & removable shoulder strap.
Ask for Available colors.

Stock #	Description
GUYSAK	Duffel Bag PVC Heavy Duty

Tri-Zone Jacket

All-season coat - Like 3 jackets for price of 1.

Features:

- Zip-out fleece liner, can be worn as fleece sweater with zipper pockets.
- Outer shell has underarm & back vents can be worn as a light rainjacket.
- Removable hood, adjustable.

Stock #	Color	Sizes
NTI848BB	Blue	XS-4XL
NTI848BT	Tan	XS-4XL
NTI848BY	Yellow	S-4XL
NTI848CB	Charcol	S-4XL



Full Zip Waist Pant

Full 2-way covered zipper.

Snap waist & zip fly access.

Velcro adjustable with elastic waist.

Color: Black

Stock #	Description
NTI838PZXXS	Pant F/Z To Waist Blk XXS
NTI838PZXS	Pant F/Z To Waist Blk XS
NTI838PZS	Pant F/Z To Waist Blk Sm
NTI838PZM	Pant F/Z To Waist Blk Med
NTI838PZL	Pant F/Z To Waist Blk Lrg
NTI838PZXL	Pant F/Z To Waist Blk XL
NTI838PZXXL	Pant F/Z To Waist Blk XXL
NTI838PZ3XL	Pant F/Z To Waist Blk 3XL
NTI838PZ4XL	Pant F/Z To Waist Blk 4XL



Fortitech Jacket - Classic Jacket - Tah-Shin

Shell:

Stretch woven nylon w/durable weather repellent finish.

Backing: brushed micro-fleece.

- Laminated internal flap. Water repellent front zipper.
- Drawcord at bottom. 2 lower water resist zip pockets.
- Napoleon-patch chest pocket with zipper & welded seams.

Stock #	Size	Color
TAHRL100MER	XS-XXL	Merc/Blue
TAHRL100PIN	XS-XXL	Pine Tar
TAHRL100RED	XS-XXL	Salsa
TAHRL100OBS	XS-XXL	Black





Canvas Work Wear Hooded Jacket

Made of heavy-duty canvas that is extremely water resistant & breathable.

- Fleece lined for warmth - Adjustable hood.
- Heavy duty zipper - 4 large zipper pockets.
- Leather trim cuffs - Cinch cord waistband.
- Adjustable shock cord waist. Brown



Stock #	Description
GRUCJXS.....	Jacket Canvas XS
GRUCJS.....	Jacket Canvas Sm
GRUCJM	Jacket Canvas Med
GRUCJL.....	Jacket Canvas Lrg
GRUCJXL.....	Jacket Canvas XL
GRUCJXXL.....	Jacket Canvas 2X
GRUCJXXXL.....	Jacket Canvas 3X



Weather Gauge Hooded Jacket - Grundens

- Water repellent breathable softshell fabric.
- Water repellent zipper - Adjustable hood cord.
- Cinch cord at hem - Velcro tabs at wrist cuff.
- Large inner chest pocket.

Color: Black, Brown, Navy



Stock #	Description
GRUWGH100BKXS.....	Jacket w/ Hood Softshell Black XS
GRUWGH100BKS.....	Jacket w/ Hood Softshell Black Sm
GRUWGH100BKM	Jacket w/ Hood Softshell Black Med
GRUWGH100BKL.....	Jacket w/ Hood Softshell Black Lrg
GRUWGH100BKXL.....	Jacket w/ Hood Softshell Black XL
GRUWGH100BK2X.....	Jacket w/ Hood Softshell Black 2XL
GRUWGH100BK3X.....	Jacket w/ Hood Softshell Black 3XL
GRUWGH100BRXS.....	Jacket w/ Hood Softshell Brown XS
GRUWGH100BRS.....	Jacket w/ Hood Softshell Brown Sm
GRUWGH100BRM.....	Jacket w/ Hood Softshell Brown Med
GRUWGH100BRL.....	Jacket w/ Hood Softshell Brown Lrg
GRUWGH100BRXL.....	Jacket w/ Hood Softshell Brown XL
GRUWGH100BR2X.....	Jacket w/ Hood Softshell Brown 2X
GRUWGH100BR3X.....	Jacket w/ Hood Softshell Brown 3X
GRUWGH100NVXS.....	Jacket w/ Hood Softshell Navy XS
GRUWGH100NVS.....	Jacket w/ Hood Softshell Navy Sm
GRUWGH100NVM	Jacket w/ Hood Softshell Navy Med
GRUWGH100NVL	Jacket w/ Hood Softshell Navy Lrg
GRUWGH100NVXL.....	Jacket w/ Hood Softshell Navy XL
GRUWGH100NV2X.....	Jacket w/ Hood Softshell Navy 2X
GRUWGH100NV3X.....	Jacket w/ Hood Softshell Navy 3X



Jeans in a wide range of sizes.
Ask salesperson for information on current stock.



Blue Work Coveralls - Dickies

- Durable long sleeve coveralls
65% Fortrel polyester/ 35% cotton
w/Scotchgard Stain Release.
- 2-way heavy-duty brass zippers.
 - Concealed snaps at neck/waist.
 - Faced cuffs w/concealed snaps.
 - Rule pockets - Hammer loops.
 - Built of 8 3/4 Oz. equestrian twill.



Stock #	Sizes										
WDM4879	Assorted sizes										
CHEST:	38	40	42	44	46	48	50	52	54		
INSEAM:	28-S	X	X	X	X	X	X	X	X	X	X
	30-RG	X	X	X	X	X	X	X	X	X	X
	32-TL	X	X	X	X	X	X	X	X	X	X

Black Straight Leg Jeans - Dickies

- Dickies fine quality, 100% cotton jeans.
• 14oz. Denim - 100% Cotton - Washed.

Stock #	Description
WDM17293Jeans



Relaxed Fit Jeans - Dickies

- Comfortable, 100% cotton, relaxed fit jeans
w/plenty of room in seat & thigh.
- Heavy duty brass zipper.
 - Back pocket stitching.

Blue Denim - Stone Washed 14 oz.

Stock #	Description
WDM13293Jeans

Black Denim - Washed 15 oz.

Stock #	Description
WDM13292Jeans



Double-Front Work Dungaree - Carhartt

- 12-ounce, 100% Washed duck-cotton.
Sits at natural waist - Full seat & thighs.
- Multiple tool & utility pockets.
 - Hammer loop - 2 reinforced back pockets
 - Chap-style double-front w/cleanout bottoms, that can hold knee pads.
 - 19" leg openings fit over work boots.
- Color: Black or Brown.



Stock #	Description
CRHB01Dungaree



Denim Traditional Fit Jean - Carhartt

- 15-Ounce, 100%-cotton denim.
- Sits slightly below natural waist.
 - Slim seat & thighs.
 - 2 reinforced back pockets.
 - 17.5" leg openings fit over work boots.
- Color: DST Darkstone or STW Stonewash..



Stock #	Description
CRHB18Jeans

Arctic Traditional Coat

- 12 Ounce, 100% ring-spun cotton Duck.
Nylon lining quilted to Arctic-weight polyester insulation.
- Corduroy top collar w/snaps for optional hood.
 - Triple-stitched main seams, 2 inside pockets.
 - Split back with bi-swing. Pleated elbow.
- Interior rib-knit storm cuffs.
Size: back length 31" - Tall: 33"
Color: Brown or Black.
- | Stock# | Description |
|--------|-------------|
| CRHC03 |Coat |

Clothing



Duck Coverall - Quilt Lined

- 12-ounce, 100% ring-spun cotton duck.
- 100% nylon quilted to mid-weight polyester lining.
- Multiple tool/utility pockets - Hammer loop.
- Corduroy top collar with snaps under collar for optional hood.
- Ankle-to-waist 2-way leg zippers with protective flaps/snaps.
- 2 covered-zipper chest pockets, pencil pocket on sleeve.
- 2-way leg zippers open to waist with wind flap/snap closure.
- Triple stitched main seams. Split back with bi-swing.
- Rib-knit storm cuffs. Pleated elbows. Pencil slot left sleeve.

Stock#	Description
CRHX01	Coverall



Duck Bib Overall - Quilt Lined

- 12-ounce, 100% ring-spun cotton duck.
- 100%-nylon quilted to polyester mid-weight lining.
- Multiple tool/utility pockets. Hammer loop.
- Ankle-to-thigh leg zippers for easy on/off - Zip fly.
- Triple stitched main seams - Metal rivets at vital stress points.
- Double knees with cleanout bottoms that can hold knee pads.

Color: Brown, Black, Dark Navy.

Stock#	Description
CRHR02	Overall



Duck Bib Overall - Unlined

- 12-ounce, 100% ring-spun cotton duck.
- Multiple tool/utility pockets. Hammer loop.
- Double knees with cleanout bottoms that can hold knee pads.
- 2 Reinforced back pockets.

Color: Brown, Black.

Stock #	Description
CRHR01BLK3230	Bib Overall Bk/Dk 32 x 30
CRHR01BLK3432	Bib Overall Bk/Dk 34 x 32
CRHR01BLK3434	Bib Overall Bk/Dk 34 x 34
CRHR01BLK3632	Bib Overall Bk/Dk 36 x 32
CRHR01BLK3832	Bib Overall Bk/Dk 38 x 32
CRHR01BLK3834	Bib Overall Bk/Dk 38 x 34
CRHR01BLK4030	Bib Overall Bk/Dk 40 x 30
CRHR01BLK4032	Bib Overall Bk/Dk 40 x 32
CRHR01BLK4034	Bib Overall Bk/Dk 40 x 34
CRHR01BLK4230	Bib Overall Bk/Dk 42 x 30
CRHR01BLK4232	Bib Overall Bk/Dk 42 x 32
CRHR01BLK4630	Bib Overall Bk/Dk 46 x 30
CRHR01BLK5032	Bib Overall Bk/Dk 50 x 32



Arctic Coverall - Quilt Lined

- 12-ounce, 100% ring-spun cotton duck.
- 100%-nylon quilted to polyester. Arctic weight lining.
- Multiple tool/utility pockets and hammer loop.
- Corduroy top collar with snaps under collar for optional hood.
- 2 covered-zipper chest pockets, pencil pocket on sleeve.
- 2-way leg zippers open to waist with wind flap/snap closure.
- Triple stitched main seams. Split back with bi-swing.
- Double knees with cleanout bottoms.
- Rib-knit storm cuffs. Pleated elbows. Pencil slot left sleeve.

Stock #	Description
CRHX02	Coverall



Woolrich Stag Shirt

- 80% wool, 20% nylon, 11.5 oz. fabric.
- Front/back double yokes. Adjustable cuffs.
- Inner comfort collar band. Upper chest pockets.
- Lower handwarmer pockets.

Colors: Red, Grey or Olive twill.

Stock #	Sizes
WOL102	M-XXL



Shoe Dryer - Peet

Lets leather breathe & retain natural oils to extend wear life.
Dry & store shoes as long as needed w/out unplugging dryer.

- Leave liners in pac boots & dry them overnight.
- Safely remove sweat/wetness/odor from any footwear.
- Improve foot comfort & health. Boot Dryer

Uses: Leather, canvas, rubber, vinyl, cloth, plastic, & all modern fibers.

Stock #	Description
PSDM94-S	Boot Dryer
PSDG2-L	Glove dryer
PSDP-2000.....	Propane boot dryer



Extension Tubes

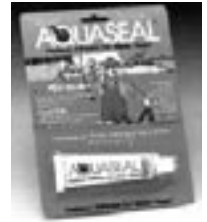
Stock #	Description
PSDH-2	Extension Tube Hip Boot
PSDK-2	Extension Tube Knee Boot



Boot Repair - Aquaseal

Urethane adhesive. Permanently seals & repair leaks with flexible, abrasion resistant & waterproof bond. Repairs neoprene, rubber, & coated fabric boots/waders

Stock #
SRV25002



Boot Rubber Band

Keeps water from going up your raingear pants leg. Put rubber bands around ankle of your boot. Use rubber band to sung in your pants when needed.

Stock # Qty
CWC-RB107-11 Lb. Bag



Insulated Boots

Ranger Summit Insulated Pac Boot

Extreme weather boot, feet stay dry & warm. 100% waterproof. Thinsulate lined.

Outer shell: light molded Tech-lite, durable.

Outsole: OmegaXT for excellent traction.

Steel shank: adds arch support.

Midsole: insulated shock-absorbing phylon.

Insulated : w/200grams of Thinsulate enclosed in 2 layers of polmeric foam, excellent warmth.

Speed laces of non-catching of rugged leather. Boot collar is foam-padded polyurethane.

Color: Black

Color: Black

Stock #	Description	Size
SRVA465-07	Ins Pac W/P Black	7
SRVA465-08	Ins Pac W/P Black	8
SRVA465-09	Ins Pac W/P Black	9
SRVA465-10	Ins Pac W/P Black	10
SRVA465-11	Ins Pac W/P Black	11
SRVA465-12	Ins Pac W/P Black	12
SRVA465-13	Ins Pac W/P Black	13
SRVA465-14	Ins Pac W/P Black	14



Viking Warm-Lined Insulated Work Boot

Insulated natural rubber -Steel shank for extra stability.

- Warm pile insulated lining good to minus 4°F / -15°C.
- Non-slip rubber chevron deck-sole in non-wet design.
- Adjustable belt collar seals out water/snow.
- Extra wide calves for easy entry.
- Alaska tested for warmth & comfort.

Stock #	Descriptions
NTI37104.....	15" Insulated Knee Boot Sz 4
NTI37105.....	15" Insulated Knee Boot Sz 5
NTI37106.....	15" Insulated Knee Boot Sz 6
NTI37107.....	15" Insulated Knee Boot Sz 7
NTI37108.....	15" Insulated Knee Boot Sz 8
NTI37109.....	15" Insulated Knee Boot Sz 9
NTI37110.....	15" Insulated Knee Boot Sz 10
NTI37111.....	15" Insulated Knee Boot Sz 11
NTI37112.....	15" Insulated Knee Boot Sz 12
NTI37113.....	15" Insulated Knee Boot Sz 13
NTI37114.....	15" Insulated Knee Boot Sz 14
NTIVW29.....	15" Non-Insulated (size 4 to 16)



Color: Brown

Stock #	Description	Size
SRVA46607.....	Ins Pac W/P Brown	7
SRVA46608.....	Ins Pac W/P Brown	8
SRVA46609.....	Ins Pac W/P Brown	9
SRVA46610.....	Ins Pac W/P Brown	10
SRVA46611.....	Ins Pac W/P Brown	11
SRVA46612.....	Ins Pac W/P Brown	12
SRVA46613.....	Ins Pac W/P Brown	13
SRVA46614.....	Ins Pac W/P Brown	14

Clothing



XTRATUF™

- Made in USA.

Best-selling commercial fishing boot, 100% waterproof. **Neoprene rubber** is softer/more pliable than regular rubber.

Triple dipped in special sealant for a seamless coating:

- Highly resistant to many organic & inorganic acids, chemicals & contamination.
- **Slip-resistant** chevron outsole/heel, superior grip on wet surface for traction & stability.
- **Ankle shaped** & cushion insole for added comfort.
- **Built-in cork** cushion insoles fight fatigue: legs/back, arch support.
- **Polymeric foam** insulation for instant warmth.
- Don't go to Alaska without it! Out performs competitors!



XtraTuf Steel Toe Footwear

Classified in accordance with:
 ASTM F2413-05 for Protective footwear Section 5.1
 Impact / 75 & 5.2
 Compression / 75 toe protection.
 Meets Canadian standard CSA Z195-02 Grade 1

Regular Toe XtraTuf - Servus

Color: Copper, Tan Boot, 16"

Size: Fits mens whole sizes: 3-15

Stock #	Description	Size
SRV22272G-03Boot Xtratuf Reg Toe	3
SRV22272G-04Boot Xtratuf Reg Toe	4
SRV22272G-05Boot Xtratuf Reg Toe	5
SRV22272G-06Boot Xtratuf Reg Toe	6
SRV22272G-07Boot Xtratuf Reg Toe	7
SRV22272G-08Boot Xtratuf Reg Toe	8
SRV22272G-09Boot Xtratuf Reg Toe	9
SRV22272G-10Boot Xtratuf Reg Toe	10
SRV22272G-11Boot Xtratuf Reg Toe	11
SRV22272G-12Boot Xtratuf Reg Toe	12
SRV22272G-13Boot Xtratuf Reg Toe	13
SRV22272G-14Boot Xtratuf Reg Toe	14
SRV22272G-15Boot Xtratuf Reg Toe	15



Steel-Toe XtraTuf

Neoprene Safety Hi-boot

Color: Copper, Tan

Size: Fits mens sizes: 5-14

Stock #	Description	Size
SRV22271G-05Boot Xtratuf Steel Toe	5
SRV22271G-06Boot Xtratuf Steel Toe	6
SRV22271G-07Boot Xtratuf Steel Toe	7
SRV22271G-08Boot Xtratuf Steel Toe	8
SRV22271G-09Boot Xtratuf Steel Toe	9
SRV22271G-10Boot Xtratuf Steel Toe	10
SRV22271G-11Boot Xtratuf Steel Toe	11
SRV22271G-12Boot Xtratuf Steel Toe	12
SRV22271G-13Boot Xtratuf Steel Toe	13
SRV22271G-14Boot Xtratuf Steel Toe	14



Insulated XtraTuf

Insulated Neoprene Hi-Boot.

Built-in foam insulation for extra warmth.

Color: Copper, Tan

Size: Fits mens sizes: 5-14

Stock #	Description	Size
SRV22274G-05Boot Xtratuf Insulated	5
SRV22274G-06Boot Xtratuf Insulated	6
SRV22274G-07Boot Xtratuf Insulated	7
SRV22274G-08Boot Xtratuf Insulated	8
SRV22274G-09Boot Xtratuf Insulated	9
SRV22274G-10Boot Xtratuf Insulated	10
SRV22274G-11Boot Xtratuf Insulated	11
SRV22274G-12Boot Xtratuf Insulated	12
SRV22274G-13Boot Xtratuf Insulated	13
SRV22274G-14Boot Xtratuf Insulated	14



Steel Toe & Insulated XtraTuf

Insulated Neoprene Safety Hi-boot.

Built-in foam insulation for extra warmth.

Color: Copper, Tan

Size: Fits mens whole sizes: 3-15

Stock #	Description	Size
SRV22273G-03Boot Xtratuf Steel Insul	3
SRV22273G-04Boot Xtratuf Steel Insul	4
SRV22273G-05Boot Xtratuf Steel Insul	5
SRV22273G-06Boot Xtratuf Steel Insul	6
SRV22273G-07Boot Xtratuf Steel Insul	7
SRV22273G-08Boot Xtratuf Steel Insul	8
SRV22273G-09Boot Xtratuf Steel Insul	9
SRV22273G-10Boot Xtratuf Steel Insul	10
SRV22273G-11Boot Xtratuf Steel Insul	11
SRV22273G-12Boot Xtratuf Steel Insul	12
SRV22273G-13Boot Xtratuf Steel Insul	13
SRV22273G-14Boot Xtratuf Steel Insul	14
SRV22273G-15Boot Xtratuf Steel Insul	15



XTRATUF

Originally developed in the 1960's for fishermen on the West coast. Made at the Rock Island Il. facility of Norcross Safety Products to keep the highest standards that have brought a cult-like allegiance to the brand for over 40 years.

Kids-Size Xtratuf - Servus

Economical kids boots. Easy care. Pebble grip self-cleaning outsole adds traction.

Color: Copper, Tan

Size: Fits Children's whole sizes: 5-13

Fits Youth whole sizes: 1-3

Stock #	Description	Size
SRV22169G-05Boot Inf/Toddler Xtratuf Sz 5	5
SRV22169G-06Boot Inf/Toddler Xtratuf Sz 6	6
SRV22169G-07Boot Inf/Toddler Xtratuf Sz 7	7
SRV22169G-08Boot Inf/Toddler Xtratuf Sz 8	8
SRV22169G-09Boot Inf/Toddler Xtratuf Sz 9	9
SRV22169G-10Boot Child Xtratuf Size 10	10
SRV22169G-11Boot Child Xtratuf Size 11	11
SRV22169G-12Boot Child Xtratuf Size 12	12
SRV22169G-13Boot Child Xtratuf Size 13	13
SRV22169G-01Boot Youth Xtratuf Size 1	1
SRV22169G-02Boot Youth Xtratuf Size 2	2
SRV22169G-03Boot Youth Xtratuf Size 3	3



SERVUS

Alaskan Sneaker - Servus

XtraTuf Neoprene shoe.

Color: Copper, Tan

Size: Fits mens whole sizes: 3-14



Stock #	Description	Size
SRV22170G-04Sneaker Alaskan 6" Xtrtuf	4
SRV22170G-05Sneaker Alaskan 6" Xtrtuf	5
SRV22170G-06Sneaker Alaskan 6" Xtrtuf	6
SRV22170G-07Sneaker Alaskan 6" Xtrtuf	7
SRV22170G-08Sneaker Alaskan 6" Xtrtuf	8
SRV22170G-09Sneaker Alaskan 6" Xtrtuf	9
SRV22170G-10Sneaker Alaskan 6" Xtrtuf	10
SRV22170G-11Sneaker Alaskan 6" Xtrtuf	11
SRV22170G-12Sneaker Alaskan 6" Xtrtuf	12
SRV22170G-13Sneaker Alaskan 6" Xtrtuf	13
SRV22170G-14Sneaker Alaskan 6" Xtrtuf	14

XtraTuf Family



Regular Toe 12" XtraTuf

Color: Copper, Tan Boot, 12"

Size: Fits mens whole sizes: 5-14

Stock #	Description	Size
SRV22172G-05Xtratuf 12" Reg Toe	5
SRV22172G-06Xtratuf 12" Reg Toe	6
SRV22172G-07Xtratuf 12" Reg Toe	7
SRV22172G-08Xtratuf 12" Reg Toe	8
SRV22172G-09Xtratuf 12" Reg Toe	9
SRV22172G-10Xtratuf 12" Reg Toe	10
SRV22172G-11Xtratuf 12" Reg Toe	11
SRV22172G-12Xtratuf 12" Reg Toe	12
SRV22172G-13Xtratuf 12" Reg Toe	13
SRV22172G-14Xtratuf 12" Reg Toe	14



PVC Economy Hi-Boot - Servus

Comfort with unique flexing in calf area reduces irritation.

- Trac10 outsole enhances slip resistance and stability.
 - Heel cup molding reduces heel slippage.
 - Foot form contour insole, comfort for all-day wear.
- 16" plain toe - 6 pair per case.

Stock #	Description	Size
SRV18822-05Boot Knee PVC	5
SRV18822-06Boot Knee PVC	6
SRV18822-07Boot Knee PVC	7
SRV18822-08Boot Knee PVC	8
SRV18822-09Boot Knee PVC	9
SRV18822-10Boot Knee PVC	10
SRV18822-11Boot Knee PVC	11
SRV18822-12Boot Knee PVC	12
SRV18822-13Boot Knee PVC	13
SRV18822-14Boot Knee PVC	14
SRV18822-15Boot Knee PVC	15



Clothing





Boot Size Conversion Chart																	
European	33	34	35	36	37	38	39	40	41	42	43	44	45	46	47	48	49
U.S. Ladies	3	4	5	6	7	8	9	10									
U.S. Men				4	5	6	7	8	9	10	11	12	13	14	15	16	

Mariner Kadett Boot

- Natural rubber 10" boot with polyester lining.
- Slip resistant deck sole. Non-marking sole.
 - Removable orthopedic designed insole.
 - Unisex sizing. Womens fit 2 sizes up.

Stock #	Description	Size
NTI926003Boot Kadett 10" Rubber	3
NTI926004Boot Kadett 10" Rubber	4
NTI926005Boot Kadett 10" Rubber	5
NTI926006Boot Kadett 10" Rubber	6
NTI926007Boot Kadett 10" Rubber	7
NTI926008Boot Kadett 10" Rubber	8
NTI926009Boot Kadett 10" Rubber	9
NTI926010Boot Kadett 10" Rubber	10
NTI926011Boot Kadett 10" Rubber	11
NTI926012Boot Kadett 10" Rubber	12
NTI926013Boot Kadett 10" Rubber	13
NTI926014Boot Kadett 10" Rubber	14

Commercial Fishing Hip-Boot - LaCrosse

Premium - Non-Insulated - Commercial fishing hip boot.

- Tractor tread outsole grips on wet/slippery surfaces.
- Canvas lining & pull straps for easy on and off.
- Removable EVA insole, comfort/cushioning.
- Reinforced rubber at leg & ankle for durability.
- Fiberglass shank for arch support.
- Wool felt midsole. Cushion insole for comfort.

Color: Black. Weight: 9.3 Lbs. per pair

Stock #	Size
LCF0015203006 6
LCF0015203007 7
LCF0015203008 8
LCF0015203009 9
LCF001520301010
LCF001520301111
LCF001520301212
LCF001520301313
LCF001520301414
LCF001520301515



Oyster Tuff 33" Hip Boot - Servus

- 100% premium grade rubber hipper. Extreme out-door activity, designed to reduce fatigue & traction with slip-resistant outsoles.
- TracTread outsole/heel for added traction.
 - Ladder shank for extra arch support/strength.
 - Boot duck lining adds durability.

Color: Black

Stock #	Description	Sizes
SRV11146-06Boot Hip Oyster Tuff	6
SRV11146-07Boot Hip Oyster Tuff	7
SRV11146-08Boot Hip Oyster Tuff	8
SRV11146-09Boot Hip Oyster Tuff	9
SRV11146-10Boot Hip Oyster Tuff	10
SRV11146-11Boot Hip Oyster Tuff	11
SRV11146-12Boot Hip Oyster Tuff	12
SRV11146-13Boot Hip Oyster Tuff	13
SRV11146-14Boot Hip Oyster Tuff	14

Seafarer 31" Hip Boot - Servus

Ideal for extreme outdoor activity, designed to reduce fatigue & traction w/slip-resistant outsoles.

- Rubber boots - Extra large & wide leg.
- Heavy-duty pull-on loops, easier boot access.
 - Boot duck lining adds extra durability.
 - Ultra composite shank reinforces arch.

Color: Black

Stock #	Sizes
SRV11444-06Boot Hip Sea Farer 6
SRV11444-07Boot Hip Sea Farer 7
SRV11444-08Boot Hip Sea Farer 8
SRV11444-09Boot Hip Sea Farer 9
SRV11444-10Boot Hip Sea Farer 10
SRV11444-11Boot Hip Sea Farer 11
SRV11444-12Boot Hip Sea Farer 12
SRV11444-13Boot Hip Sea Farer 13
SRV11444-14Boot Hip Sea Farer 14



Clothing



SERVUS

Georgia Giant / Deck Shoes - Georgia Boot



Ranger Cutthroat Bootfoot Wader

Has it all, lightweight, warm, comfortable.

- Chest high 3.5mm neoprene.
- Large side-reach chest pockets, easy access.
- Ranger diamond fit crotch, comfortable fit.
- Polyurethane knee & seat shield overlays.
- All rubber 100% waterproof boot w/self-cleaning cleats.
- 200 gram thinsulate insulaton built-in each foot.

Color: Dark Brown

Stock #	Description
SRVA2600-07	Wader Neop Boot w/ Susp 7
SRVA2600-08	Wader Neop Boot w/ Susp 8
SRVA2600-09	Wader Neop Boot w/ Susp 9
SRVA2600-10	Wader Neop Boot w/ Susp 10
SRVA2600-11	Wader Neop Boot w/ Susp 11
SRVA2600-12	Wader Neop Boot w/ Susp 12
SRVA2600-13	Wader Neop Boot w/ Susp 13
SRVA2600-14	Wader Neop Boot w/ Susp 14



Romeo "Georgia Giant" Deck Shoes

Full grain leather, durable molds to foot.

- Oil resistant polyurethane "Georgia Giant" outsole.
- Repairable outsole: Abrasion, chemical, oil, slip resistant.
- Covered cushion insole. Hi-performance lining
- Steel shank - EVA comfort midsole. Full heel.

Color: Soggy Brown.

Also available, GBCGR270, same shoe in black

Medium

Stock #	Description
GBCGR262-07M	Brwn Romeo Full Heel M 7
GBCGR262-08M	Brwn Romeo Full Heel M 8
GBCGR262-09M	Brwn Romeo Full Heel M 9
GBCGR2621012M	Brwn Romeo Full Heel M 10-1/2
GBCGR262-10M	Brwn Romeo Full Heel M 10
GBCGR2621112M	Brwn Romeo Full Heel M 11-1/2
GBCGR262-11M	Brwn Romeo Full Heel M 11
GBCGR262-12M	Brwn Romeo Full Heel M 12
GBCGR262-13M	Brwn Romeo Full Heel M 13
GBCGR262-14M	Brwn Romeo Full Heel M 14

Wide:

Stock #	Description
GBCGR262-07W	Brwn Romeo Full Heel W 7
GBCGR262-08W	Brwn Romeo Full Heel W 8
GBCGR262-09W	Brwn Romeo Full Heel W 9
GBCGR2621012W	Brwn Romeo Full Heel W 10-1/2
GBCGR262-10W	Brwn Romeo Full Heel W 10
GBCGR2621112W	Brwn Romeo Full Heel W 11-1/2
GBCGR262-11W	Brwn Romeo Full Heel W 11
GBCGR262-12W	Brwn Romeo Full Heel W 12
GBCGR262-13W	Brwn Romeo Full Heel W 13
GBCGR262-14W	Brwn Romeo Full Heel W 14

Romeo "Georgia Giant" Wedge Sole Deck Shoes

Full grain leather, durable, molds to foot.

- Internal padded collar. Chemical & oil resistant.
- "Poly Wedge Ultra" outsole. Abrasion, chemical, oil, and slip resistant.

Sizes: Mens 6 1/2 thru 14.

Color: Soggy Brown

Stock #	Description
GBCGR274	Deck Shoe



Ranger Bluecat / Bootfoot Wader

Classic wader; roomy, for layers, easy movement.

- Forest green rubber uppers with soft cotton lining.
- Inside chest pocket secures and keeps items dry.
- Rustproof suspender buttons are long lasting.
- Nylon drawstring belt loops. Steel shank adds support.
- All rubber 100% waterproof boot w/self-cleaning cleats.
- Polymeric foam insulation built into each foot.
- Featured in Field & Stream.

Color: Forest Green

Stock #	Description
SRVA2070-06	Wader Rubber Ins No Susp 6
SRVA2070-07	Wader Rubber Ins No Susp 7
SRVA2070-08	Wader Rubber Ins No Susp 8
SRVA2070-09	Wader Rubber Ins No Susp 9
SRVA2070-10	Wader Rubber Ins No Susp 10
SRVA2070-11	Wader Rubber Ins No Susp 11
SRVA2070-12	Wader Rubber Ins No Susp 12
SRVA2070-13	Wader Rubber Ins No Susp 13
SRVA2070-14	Wader Rubber Ins No Susp 14



Suspenders for Wader - Servus

1 size fits all.

Stock #
SRV2000

Clothing





Ladybug Clogs

Ideal rubber gardening shoes.

- Soft smooth fabric lining for easy on/off.
- Extra-high heel cup insures a snug/comfy fit.
- Easy care: Washable removeable cushion insole.
Self clean rubber outsole.



Yellow Ladybug Clog

Ranger clog - Color: Yellow.

Stock #	Description	
SRV64002-05	Clog Ladybug Yellow	5
SRV64002-06	Clog Ladybug Yellow	6
SRV64002-07	Clog Ladybug Yellow	7
SRV64002-08	Clog Ladybug Yellow	8
SRV64002-09	Clog Ladybug Yellow	9
SRV64002-10	Clog Ladybug Yellow	10



Yellow LadyBug Print Clog

Ranger clog - Color: Ladybugs on a Yellow background.

Stock #	Description	
SRV63998-05	Clog Ladybug Yellow w/Bugs	5
SRV63998-06	Clog Ladybug Yellow w/Bugs	6
SRV63998-07	Clog Ladybug Yellow w/Bugs	7
SRV63998-08	Clog Ladybug Yellow w/Bugs	8
SRV63998-09	Clog Ladybug Yellow w/Bugs	9
SRV63998-10	Clog Ladybug Yellow w/Bugs	10



Navy LadyBug Clog

Ranger clog - Color: Navy Blue.

Also available: 02 Yellow, 17 Elect. Blue.

Stock #	Description	
SRV64001-5	Clog Ladybug Navy	5
SRV64001-6	Clog Ladybug Navy	6
SRV64001-7	Clog Ladybug Navy	7
SRV64001-8	Clog Ladybug Navy	8
SRV64001-9	Clog Ladybug Navy	9
SRV64001-10	Clog Ladybug Navy	10
SRV64001-11	Clog Ladybug Navy	11



Green LadyBug Clog

Ranger clog - Color: Green.

Stock #	Description	
SRV64003-5	Clog Ladybug Green	5
SRV64003-6	Clog Ladybug Green	6
SRV64003-7	Clog Ladybug Green	7
SRV64003-8	Clog Ladybug Green	8
SRV64003-9	Clog Ladybug Green	9
SRV64003-10	Clog Ladybug Green	10
SRV64003-11	Clog Ladybug Green	11

White Knee Boot - Servus

Mid-boot w/beige "anti-skid" outsole & heel for traction.

Injection molded - Contour cushion insole - PVC Outerboot.

100% waterproof, seamless, is reinforced at stress points

Mens Size: 5-12 Color: White



Stock #	Description	
SRV74928-05	Boot Knee 12" White	5
SRV74928-06	Boot Knee 12" White	6
SRV74928-07	Boot Knee 12" White	7
SRV74928-08	Boot Knee 12" White	8
SRV74928-09	Boot Knee 12" White	9
SRV74928-10	Boot Knee 12" White	10
SRV74928-11	Boot Knee 12" White	11
SRV74928-12	Boot Knee 12" White	12



Clothing



Army Extreme Cold Sock.

Cushioned throughout.
 Sock: 75% wool and 25% cotton.
 Color: Natural.
 Sizes: 9-11 1/2 or 12-13

Stock #	Description
ELRM111Sock Cot/Wool Army Nat 10-11 1/2
ELRM112Sock Cot/Wool Army Nat 12-13



Montana Wool/Poly Sock

Basic wool sock. Very versatile.
 Sock: 45% wool, 45% polypropylene, 10% nylon.
 Color: Natural with red top band.
 Sizes: 9-11 or 10-13

Stock #	Description
ELRT394Sock Montana Wool/Poly 9-11
ELRT395Sock Montana Wool/Poly 10-13



OTC Heavy-Weight Thermal Wool Sock

Thermolite for superior insulation .
 Sock: 30% wool /50% thermolite/ 14% nylon/
 5% acrylic/ 1% elastic.
 Color: Grey with dark grey foot & top band.

Stock #	Description
ELRT355Sock Wanderer Wool/Therm 10-13



Trapper Over-Calf Sock

Fully cushioned thermal.
 Sock: 79% wool /10% hi-loft acrylic/
 10% polypropylene/ 5% nylon/ 5% thermolite.
 Color: Grey w/Black trim.
 Sizes: 9-11 or 10-13

Stock #	Description
ELRT311Sock Over Calf Wool Blend LG
ELRT312Sock Over Calf Wool Blend XL



Yukon Heavy Weight Boot Sock

Knit in toe & heel.
 Sock: 30% wool/ 50% hi-loft acrylic/ 20% stretch
 nylon.
 Color: Grey with red top band.
 Sizes: 9-11 or 10-13 or 13-15

Stock #	Size	Description
ELRT867M	Medium yukon wool blend
ELRT867L	Large yukon wool blend
ELRT867XL	X-Large yukon wool blend



Huskie Premiere Over-Calf Sock

Tested on Iditarod trail in Alaska, worn
 with polypropylene liner.
 100% virgin wool, except spandex top.
 No dyes or chemicals.
 Machine wash warm, hang dry.
 Color: Natural, warm grey top.

Stock #	Size	Description
ELRT320	Sock 100% Wool Sz 9-11
ELRT321	Sock 100% Wool Sz 10 - 11-1/2
ELRT322	Sock 100% Wool Sz 12-13
ELRT323	Sock 100% Wool Sz 14-15



Multi-Cushioned Crew-Sock

Cotten crew w/high spliced heel & toe.
 Sock:80% cotton/20% polypropylene.
Color: White with grey sole, heel, toe. - 6 pack
 ELRAC7628 1/2-11
 ELRAC76310-13



Clothing



Wader-Thermolite Sock

Morpul top that fits over knees & lots of cross stretch so no binding.

Sock leg: 100% wool

Sockfoot :46% wool, 46% thermolite, 4% polypropylene, 4% lycra.

Color: Olive leg, grey & black foot & red toe/ankle.

Sizes: 10-13

Stock #	Description
ELRF400Sock Wader Wool Blend 10-13



Polypropylene Liner

Tested on Iditarod trail in Alaska, worn with thermal insulating sock for superior warmth & comfort.

Sock: 97% polypropylene/ 3% lycra.

Colors: White, Black, Navy.

ELRL750.....Liner White 9-11

ELRL752Sock Liner Black 10-13



Boot Socks / Liners



Deep-Pile Fleece Boot Liner

Fits most non-insulated knee boots. Provides a deep-pile lining for comfort & warmth in colder weather.

Stock #	Description	Size
SRV28000SLiner Boot Fiber Fleece SM	(6-7)
SRV28000MLiner Boot Fiber Fleece MD	(8-9)
SRV28000LLiner Boot Fiber Fleece LG	(10-11)
SRV28000XLLiner Boot Fiber Fleece XL	(12-13)
SRV28000XXLLiner Boot Fiber Fleece XXL	(14-15)

Polartec Fleece Sock - Stormy Seas

Perfect sock to use with rubber boots.

Polyester fleece fir extra warmth.

Roll over top of boots, so won't slip in.

Stock #	Sizes
STSGFSS
STSGFMM
STSGFLL
STSGFXLXL
STSGFXXLXXL



Thermalite Insulating Boot Liner

Ranger thermolite lining - Extra thick/warm.

3/4' foam replaces worn liners in most fabric

or leather-top pacs. Mens whole sizes 6-14. Washable

Fit Pacs: A421, 422 A465,A466, A485, A486, A487, A488, A536.

Stock #	Description	Size
SRVA417-06Liner Boot Ins6
SRVA417-07Liner Boot Ins7
SRVA417-08Liner Boot Ins8
SRVA417-09Liner Boot Ins9
SRVA417-10Liner Boot Ins10
SRVA417-11Liner Boot Ins11
SRVA417-12Liner Boot Ins12
SRVA417-13Liner Boot Ins13
SRVA417-14Liner Boot Ins14



Polartec Fleece Sock - Stormy Seas

Same as above with - Heavier-weight fleece.

Fuzzy on both sides for added warmth.

Stock #	Description
STSGF200SSock Fleece 200 SM
STSGF200MSock Fleece 200 MD
STSGF200LSock Fleece 200 L
STSGF200XLSock Fleece 200 XL
STSGF200XXLSock Fleece 200 XXL



Boot Insoles / Socketts

SERVUS



Felt Insole - Men's

Perfect foot bed for waterproof boots.
 Thick cushioning allows air/moisture to ventilate freely.
 Forms to foot for custom support - Removeable/washable.
 Wide widths that can be trimmed for narrow boots.

Stock #	Description
SRVINSOLE05	Insole Felt Mens 5
SRVINSOLE06	Insole Felt Mens 6
SRVINSOLE07	Insole Felt Mens 7
SRVINSOLE08	Insole Felt Mens 8
SRVINSOLE09	Insole Felt Mens 9
SRVINSOLE10	Insole Felt Mens 10
SRVINSOLE11	Insole Felt Mens 11
SRVINSOLE12	Insole Felt Mens 12
SRVINSOLE13	Insole Felt Mens 13
SRVINSOLE14	Insole Felt Mens 14
SRVINSOLE15	Insole Felt Mens 15

Wool Felt Insole

Warmth / cushion / comfort.

Stock #	Description	Size
NTRINSOLE05	Insole Wool Felt	5
NTRINSOLE06	Insole Wool Felt	6
NTRINSOLE07	Insole Wool Felt	7
NTRINSOLE08	Insole Wool Felt	8
NTRINSOLE09	Insole Wool Felt	9
NTRINSOLE10	Insole Wool Felt	10
NTRINSOLE11	Insole Wool Felt	11
NTRINSOLE12	Insole Wool Felt	12
NTRINSOLE13	Insole Wool Felt	13
NTRINSOLE1416	Insole Wool Felt	14-16



Bama Socketts

Removable, insulating boot liners.
 Acrylic inner layer and cotton-tricot outer.
 layer wicks away sweat and insulates against cold.
 Helps by acting as a blotter to keep feet dry.
 Wear 1 size larger boot when using Bama Socketts.

Stock #	Description
SRV28500-05	Bama Sock Sz 5
SRV28500-06	Bama Sock Sz 6
SRV28500-07	Bama Sock Sz 7
SRV28500-08	Bama Sock Sz 8
SRV28500-09	Bama Sock Sz 9
SRV28500-10	Bama Sock Sz 10
SRV28500-11	Bama Sock Sz 11
SRV28500-12	Bama Sock Sz 12
SRV28500-13	Bama Sock Sz 13
SRV28500-14	Bama Sock Sz 14
SRV28500-15	Bama Sock Sz 15



Clothing





60% Wool Sock

Entire sock is thermal knit. Ribbed cuff.
 Sock: 60% wool, 40% Nylon.
 Color: Natural White. Size: 10-13

Stock #	Description
DRY1260	Knit Sock

Heavy Weight Thermal Wool Sock

Thermal knit at foot only.
 Keep feet warm, especially wearing boots.
 Sock: 70% wool, 28% nylon, 2% spandex.
 Color: Natural w/Red top edging.

Size: 11

Stock #	Description
DRY1165	Sock 70% Wool Thermal



Wool / Poly Sock

Reinforced with 2-ply twisted yarn stronger/comfort.
 Sock: 65% Wool / 30% Polypropylene / 5% Stretch Nylon.
 Color: Grey & White / **Sizes: 10-13**

Stock #	Description
DRY165ST.....	Wool Sock

Wool/Polypro Sock

Polypropylene added to thermal knit keeps feet dry.
 even in harshest conditions.
 Sock: 60% wool,20% polypropylene, 17% nylon,2% spandex.
 Color: Natural White with red top edging.

Stock #	Description
DRY4246	Size 9-11
DRY4266	Size 10-13



Wool/Acrylic - Medium Weight Sock

2-ply twisted yarn knit. Excellent cost/comfort.
 Sock: 60% Wool / 40% Nylon.
 Color: Natural white with red top edging.
 Sizes: 10 1/2 - 11 1/2

Stock #	Description
DRY169	Sock, Large

Extreme Cold Socks

Warmest sock with thermal knit throughout.
 Sock: 85% wool / 12% Stretch nylon / 2% spandex.
 Color: Natural grey with white top band.
 Size: 10-13

Stock #	Description
DRY1155	Sock 85% Wool Extreme Cold



Clothing



Glove - Black Latex

Unsupported, unlined, light duty, natural rubber latex.
 • 17 mil thick for superior tactile sensitivity & dexterity.
 • Chemical, snag, puncture, abrasion & cut resistance.
 • Component materials, comply with FDA regs. for food contact.
 • Color: Blue or Black - Patterned grip.
 Sold per dozen

Stock #	Description
EDM356-7	Glove Latex Blue SZ 7
EDM356-8	Glove Latex Blue SZ 8
EDM356-9	Glove Latex Blue SZ 9
EDM356-10	Glove Latex Black SZ 10
EDM356-11	Glove Latex Black SZ 11



Goatskin Leather Glove

Knitback, with superior durability of genuine goatskin, 10 x stronger than cowskin, 3 times stronger than pigskin.
 • Maximum hand dexterity for superior comfort.
 • Adjustable elastic wrist cuff for secure fit.
 • Reinforced thumb & fingertips provide increased protection & added durability.

Stock #	Description
SSMSS666S	Leather Palm Knitback Sm
SSMSS666M	Leather Palm Knitback Med
SSMSS666L	Leather Palm Knitback Lrg
SSMSS666XXL	Leather Palm Knitback 2X



Clothing

Fingerless Gloves

Fingerless wool glove used for sport and work.
 Made in USA - Mens 1 size fits most.

Stock #	Description
BRN13-168	Glove Fingerless Wool Black



Mid-Pro - Cut Resistant Glove - Spectra

Medium weight 10 gauge Spectra Guard yarn, good dexterity.
 • Doubleguard antimicrobial protection.
 • 90% of the cut protection of a heavyweight glove, 45% less weight.
 • Great fit, comfort & flexibility. Dish washer safe.
 • Red cuff border. Sold per each.

Stock #	Description
DDKDD10SPSM	Spectra Cut Resist Sm
DDKDD10SPMD	Spectra Cut Resist Med
DDKDD10SPLG	Spectra Cut Resist Lrg
DDKDD10SPXLG	Spectra Cut Resist XL



Wire Guard - Cut Resistant Glove - Spectra

Medium weight 10 gauge stainless steel wire core.
 • Duraguard antimicrobial protection .
 • Cut resistant is higher than any other 10 gauge glove.
 • Black cuff border. Sold per each

Stock #	Description
DDKDD10WCSM	Cut Resist SS Sm
DDKDD10WCMD	Cut Resist SS Med
DDKDD10WCLG	Cut Resist SS Lrg
DDKDD10WCXLG	Cut Resist SS XL



Glove - Ragg Wool

Material: Ragg wool - Natural color.

Stock #	Description
DRFG-75L	Glove Ragg Wool Mens Large
DRFG-75M	Glove Ragg Wool Mens Medium



Cut Resistant Gloves

These products are cut resistant but not cut-proof or point puncture resistant.



Whizard Preguard Glove

Light-duty. Combo: spectra/stainless steel.
Lightweight & comfortable - Ambidextrous.
Sold per each.

Stock #	Description
WHI133839.....	Whizard Preguard Glove Sm
WHI133840.....	Whizard Preguard Glove Md
WHI133841.....	Whizard Preguard Glove Lg



Hand Shield Glove

Spiral wrapped steel for strength and comfort, resistant to breakage.
 • Highest cut resistance by weight of any steel yarn on market.
 • Anti-microbial yarns. Fully washable/bleachable.
 • FDA approved materials. Color coded for size.
 • Cuff is durable, non-allergenic neoprene elastic.
 Steel monofilament spirals:
 Encased in textured polyester yarn & 2 covers of industrial strength polyester for grip and abrasion resistance.

Stock #	Description
FOR81613.....	Glove HandShield 81613

Talon - Whizard Glove

Medium-duty - Combo: spectra/vectran/stainless steel.
Knife hand & general use glove. "Second skin" fit.
Unmatched combo: cut resistance, dexterity & durability.
Ambidextrous - Sold per each.

Stock #	Size
WHI134533	Medium
WHI134534	Large
WHI134535	X-Large



Ultimate Shield

Encapsulated stainless steel in sheath core of polyethylene/polyester anti-microbial filament yarn.
 • Max cut resistance and durability.
 • Elastic over banding in cuff for comfort.
 • Solves problem of steel wire fragmentation.
 • Washable & bleach safe. Ambidextrous fit.
 • FDA/USDA approved materials.
 Sold per each.

Stock#	Size
FOR86001.....	X-Small
FOR86002.....	Small
FOR86003.....	Medium
FOR86004.....	Large
FOR86005.....	X-Large..



Handguard II Glove - Whizard

Heavy-duty - Patented combo: kevlar/spectra/stainless steel.
Unmatched combo of cut resistance & comfort.
Excellent thermal properties - Ambidextrous.

Stock #	Size
WHI333021	Small
WHI333023	Medium
WHI333025	Large
WHI333027	X-Large



Performance Shield

High degree of cut-resistance. Very flexible and durable.
Spectra with industrial anti-microbial filament polyester yarn in outer core.
 • Exceptional cut resistance.
 • Washable & bleach safe. Ambidextrous fit.
 • FDA/USDA approved materials.
 Sold per each.

Stock#	Size
FOR86501.....	X-Small
FOR86502.....	Small
FOR86503.....	Medium
FOR86504.....	Large
FOR86505.....	X-Large



Clothing



Wool Gloves & Liners

Wool Gloves

Ragg Wool with Thinsulate insulation.

Color: Grey or Dark Grey

Stock #	Description	Size
DRFG-75M	85% wool	Mens Med.
DRFG-75L	85% wool	Mens Lrg



Wool Liner

Inexpensive surplus liner.
75% Wool - 25% Nylon.

Stock #	Size
FLT3	M
FLT4	L
FLT5	XL
FLT6	XXL



Fingerless Wool Glove - Thinsulate Lined

Ragg Wool w/Thinsulate insulation.

Color: Natural

Stock #	Description	Size
DRFG78TL	Fngrls Wool/ Lined	Large
DRFG78TM	Fngrls Wool/ Lined	Medium



Wool Glove - Thinsulate Lined

Ragg Wool w/Thinsulate insulation.

Color: Natural

Stock #	Description	Size
DRFG75TL	Wool Reg Thin Lined	Large
DRFG75TM	Wool Reg Thin Lined	Medium



Polypro Glove Liner

Polypropylene glove liner.

Stock #	Color	Sizes
SEI2170S/M	Black	S/M
SEI2170L/XL	Black	L/XL



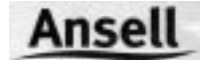
Orange Plastic Stripe Glove

Non-slip Yellow, spun-nylon knit glove w/vinyl print.

Stock #	Size
PFGORS	Small
PFGORM	Medium
PFGORL	Large
PFGORXL	X-Large



Lightweight Glove Liners



Thermaknit Insulator Glove Liner - Edmont

Lightweight Thermaster fast-wick fibers.

Liner under gloves, hand warmer in cold/damp - Ambidextrous.

Use: Handle chilled/refrigerated products, Fishing industry, Construction, General maintenance, Utilities.

Stock #	Color	Size
EDM78-101	Blue	Universal

Blended Glove Liners

Blended Glove Liners

Polyester / Cotton blend.

Color: Natural

Stock #	Description
LIB4517QL	Large

Reversible / String knit - Glove Liners

80% Poly / 20% Cotton blend.

Cotton string knit with knit wrist.

Color: Bleached White.

Stock #	Description	Color
BMC1JC1201B	Small	Yellow
BMC1JC1201M	Medium	Green
BMC1JC1201L	Large	White
BMC1JC1201XL	XL	Brown



Poly Nylon Glove Liners

80% Poly / 20% Nylon blend.

Color: Bleached White.

Stock #	Description	Color	Size
DDK1120XS	Glove Liner Poly/Ny	Red-Gray	XS
DDK1120S	Glove Liner Poly/Nyl	Blue	Sm
DDK1120M	Glove Liner Poly/Nyl	Yellow	Med
DDK1120L	Glove Liner Poly/Nyl	Green	Lrg
DDK1120XL	Glove Liner Poly/Nyl	Brown	XL

Nylon Glove Liners.

Knit nylon liner, knit wrist.

Color: Bleached White.

Stock #	Description	Size
BMC1KS0101S	Glove Liner Knit Nylon	Sm
BMC1KS0101M	Glove Liner Knit Nylon	Med
BMC1KS0101L	Glove Liner Knit Nylon	Lrg
BMC1KS0101XL	Glove Liner Knit Nylon	XL



Latex Glove

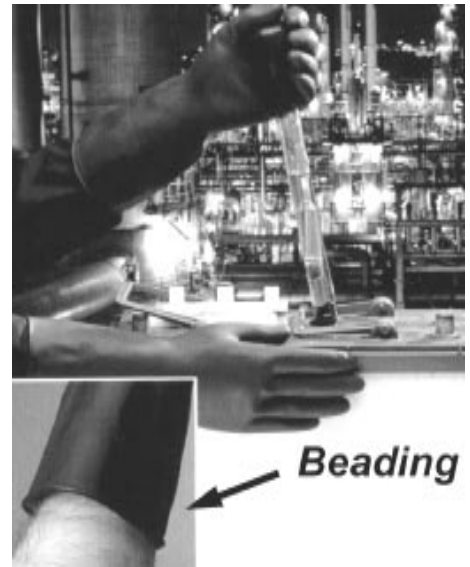
High resistance to water based chemicals.

- Tough, general purpose industrial glove.
- High Resistance to water based chemicals.
- Comfortable, yet stands-up to rough treatment.
- Longer gauntlet, beaded cuff for tear resistance, easy pull-on.

Uses: Where heavy-duty chemical protection is essential.
Commercial fishing, agriculture, assembly, mining, janitorial, sanitation.
Packed 1 pair per polybag.

Stock #	Color	Size
MGI173S	Black	Small
MGI173M	Black	Med.
MGI173L	Black	Large
MGI173XL	Black	X-Lrg

(**Beading:** Rolled edge of cuff prevents cuff rolling back.
Helps prevent droplets travelling beyond glove.)



Latex Glove - Marigold

Premium flock lined, medium weight, natural rubber latex.

- Excellent wear & protection - Recessed diamond grip.
- Rolled cuff for tear resistance & easy pull-on.

Uses: Food handling, general assembly/manufacturing, maintenance, processing.

Comply: 221 CFR for food uses.

Stock #	Color	Size
MGI326S	Yellow	Small
MGI326M	Yellow	Med
MGI326L	Yellow	Large
MGI326XL	Yellow	X-Larg

Latex Glove - Marigold

High resistance to water based chemicals.

- Tough general purpose natural rubber latex.
- Roughened finish for excellent grip in damp conditions.
- Beaded cuff for tear resistance and easy pull-on.
- Extra length cuff for ventilation & max protection.
- Flock lined for extra comfort. 12" latex.

Stock #	Description
MGI2JL	Glove Marigold Orange LG
MGI2JM	Glove Marigold Orange MD
MGI2JS	Glove Marigold Orange SM
MGI2JXL	Glove Marigold Orange XL

Natural Latex Glove - DuBarry

Household & industrial use. Cotton inner surface. No powder.

- Easy to put on / take off - Sure grip, prevents slipping.
- Molded hand for better fit and comfort.
- Amazing strength and durability. Hot water resistant.
- Guaranteed against manufacture defects.

Uses: Boat building, fish packing, fish cleaning, restaurant chores, fruit picking.

"Poly" packed, 6 pair of a size to a box.
Sold by dozen or individual pairs. Color: Orange
10 doz. per/ Master carton, weight 40 lbs. carton.

Stock #	Sizes
DUB0707S	Small
DUB0707M	Medium
DUB0707L	Large
DUB0707XLG	X-Large



Clothing



Scorpio

Neoprene-coated, premium quality.
 Resists: broad range of chemicals, & oils, acids, caustics/ solvents.
 • Interlock knit cotton liner & neoprene coating stretch for snug fit.
 • No seams. Dipped rough finish.
 • Handles wet slippery materials easier/safer.
 Uses: Petrochemical/refineries, clean, degrease, maintenance,
 all-around utility, material handling - Wet or dry.



Canners & Handlers

Natural rubber latex: Unsupported, unlined, medium-duty.
 Excellent dexterity, tensile strength & elasticity.
 • 20-mil thick: good chemical, snag, abrasion, puncture/cut resistance.
 • Diamond embossed grip with rolled beaded cuff: strength/protection.
 • 12" gauntlet fully coated.
 Uses: Poultry - Food process, small parts assembly, Pharmaceutical manufacturing, janitorial/plant maintenance.
 * Caution: Glove contains natural rubber latex, that may cause allergic reactions in some individuals. Color: Natural.

Stock #	Size
EDM392-7	7
EDM392-8	8
EDM392-8 1/2	8-1/2
EDM392-9	9
EDM392-9 1/2	9-1/2
EDM392-10	10
EDM392-11	11



Color: Green

Stock #	Description	Sizes
EDM8-354L	14" Fully Coated GauntletLarge
EDM8-354XL	14" Fully Coated GauntletX-Large



Original Nitty Gritty Glove

Palm-coated natural rubber - Cotton flannel liner.
 Wrinkle grip - Color: White w/Yellow coating.

Stock #	Description
BST65NFWFully Coated 12" Gauntlet
BST67NFWFully Coated 14" Gauntlet

Warm Gloves

Neoprene Cold Water Glove - Stearns®

3mm neoprene cold weather gloves retain flexibility in cold water.
 • Rugged sharkskin palms for sure grip.
 • Seams are glued & blind stitched.

Stock #	Size
STR5600SGlove Neoprene 9" Sm
STR5600MGlove Neoprene 9" Md
STR5600LGlove Neoprene 9" Lg
STR5600XLGlove Neoprene 9" XL
STR5600XXLGlove Neoprene 9" XXL



Nylon Gloves

Suede palm. Thinsulate insulation.
 Water barrier lining.
 Color: Blackl

Stock #	Description
DRFG255BLKSThins Lined Fleece Blk SM
DRFG255BLKSMThins Lined Fleece Blk S/M
DRFG255BLKMThins Lined Fleece Blk MD
DRFG255BLKLXLThins Lined Fleece Blk L/XL



Thermal Pro Glove Liner

Ultimate moisture management, keeps you warm & dry.
 High-tech hollowcore fiber reflects body heat back.
 Water wicking, moisture control fibers.
 Lightweight for maximum dexterity & touch sensitivity.
 Use: for both cold & heat protection, as liner or main glove.
 * Not for open flame or temps 300°F or above.
 Designed for short duration contact.

Stock #	Description
DDK5120BGlove Liner Thermax S-XL
DDK5120JGlove Liner Thermax Jumbo

Insulated Nitty Gritty

Insulated natural rubber. 12" gauntlet & safety cuff.
 Fully coated cotton Jersey with triple-layered foam insulation. Wrinkle grip.
 Color: Light Yellow

Stock #	Description
BST95NFW12" Gauntlet Insulated



Clothing





Neoprene (Grab Glove)

Neoprene coated cotton liner - Wrinkle grip.
 • Multi-dipped: adds protection/extra durability.
 • Sanitized liner reduces effects of sweat, mold, & mildew.
 • Color: Black

Stock #	Description
BST6780R	Fully Coated 12" Gauntlet
BST6784	Fully Coated 14" Gauntlet
BST6797	Fully Coated Elbow Length Gauntlet
BST6797R	Fully Coated Elbow Length Gauntlet w/"Neograb", a rough wet grip finish.

Cannonball

PVC-coated, cotton jersey liner.
 Sanitized gauntlet - Rough grip.
 Color: Forest Green.



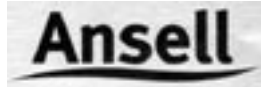
Stock #	Description
BST812	Fully Coated 12" Gauntlet
BST814	Fully Coated 14" Gauntlet



Hustler Glove

PVC-coated, Nitrile reinforced
 Cotton interlock sanitized liner.
 Rough grip. Color: Red

Stock #	Description
BST724R	Fully Coated 14" Gauntlet
BST728R	Fully Coated Elbow Length Gauntlet



Hycron - Oyster Glove

Blue NBR coating - Soft, 2-piece jersey lining.
 Superior handling rough, abrasive items.
 • Excellent flexibility, dry grip.
 • Replaces leather & other coated gloves.
 • Curved fingers, wing-thumb. Fully coated knitwrist.



Stock #	Size
EDM27-602S	Small
EDM27-602M	Medium
EDM27-602L	Large

Neox Glove

Neoprene industrial weight coated. Better all-around.
 • Resists: cuts, abrasions & chemicals.
 • Interlock knit cotton lining resists punctures, snags.
 • Curved fingers, wing thumb: fit/comfort - No seams.
 Use: Petrochemical, refining, degreasing, plating, metal fabrication, handle: oils, acids, caustics, alcohols, many solvents. Color: Black



Stock #	Description
EDM9-908	Lighter Weight Fully Coated
EDM9-909	Fully Coated Knitwrist

Grab-It

Rubber-flock finish, cotton jersey-lined.
 Designed to replace heavy cotton/ leather palm gloves.
 • Heavy textured, extra protection, long wear, secure grip.
 • Soft jersey lining for comfort. Color: Beige.
 Use to handle smooth, slippery or sharp objects, glass, sheet metal, castings, cores, tile, block, veneer.



Stock #	Description
EDM6-660	Fully Coated Knitwrist
EDM6-662	10" Fully Coated Gauntlet



Bag Balm

Hand conditioner.

Stock #	Description
COSBB	Bag Balm 10 oz Antiseptic





Nitri-Pro Glove

Palm-coated nitrile, cotton jersey liner.
Knit wrist sanitized - Smooth grip.
Color: Navy with Navy dip.

Stock #	Description
BST7000-08	Nitri-Pro Full Coat Sm
BST7000-09	Nitri-Pro Full Coat Med
BST7000-10	Nitri-Pro Full Coat Lrg



Latex Canner Glove

Unlined natural latex - 19 ga.
Pinked cuff - 12" Length - Color: Natural

Stock #	Description
BMC1UR0392M	Latex Canner MD Size 8
BMC1UR0392L	Latex Canner LG Size 9
BMC1UR0392XL	Latex Canner XL Size 10



Chem Master

Neoprene over natural rubber - 2.6-mil thick.
Tractor tread grip. Cotton flock lining. 12" length
Wear indicator over-dip. Color: Black with blue cuff.

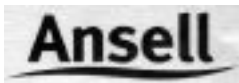
Stock #	Description
BSTCHM-M	Neo Ovr Rub Med
BSTCHM-L	Neo Ovr Rub Lrg
BSTCHM-XL	Neo Ovr Rub XL



Latex Disposable Glove

General-purpose. Powder free.
Use with liquids, cleaners. 100 gloves per box. Color: Natural

Stock #	Description
BMC1UL0007S	Glove Latex Dis Pw/Free S
BMC1UL0007M	Glove Latex Dis Pw/Free M
BMC1UL0007L	Glove Latex Dis Pw/Free L
BMC1UL0007XL	Glove Latex Dis Pw/Free XL



Natural Rubber Latex Gloves

Unsupported, unlined, light-duty.
17 mils thick w/great tactile sensitivity/dexterity.
Good chemical, snag, puncture, abrasion, & cut resist.
Materials comply to FDA / food contact. Sold per dozen
Patterned grip of bright blue color: poultry/food processing.
* Caution: Glove contains natural rubber latex, may cause allergic reactions in some individuals.

Stock #	Description
EDM356-7	Glove Latex Blue Sz 7
EDM356-8	Glove Latex Blue Sz 8
EDM356-9	Glove Latex Blue Sz 9
EDM356-10	Glove Latex Blue Sz 10
EDM356-11	Glove Latex Blue Sz 11



Nitrile Disposable Glove

General-purpose. Powdered or powder free.
Use: Gardens, chemicals, pesticides & solvents. Color: Blue
*Consult a chemical chart to verify suitability of glove.

Stock #	Description
BMC1UH0007-S	Glove Nit Pwd/Free Disp 100c S
BMC1UH0007-M	Glove Nit Pwd/Free Disp 100c M
BMC1UH0007-L	Glove Nit Pwd/Free Disp 100c L
BMC1UH0001S	Glove Nit Disp 100c S
BMC1UH0001M	Glove Nit Disp 100c M
BMC1UH0001L	Glove Nit Disp 100c L

Clothing



Atlas® Fit

General Purpose Work Gloves

- Latex palm coating: protects against punctures/abrasion.
 - Curved shape allows hands to flex - Great grip.
 - Breathable, versatile & comfortable - Machine washable.
 - Open back, 50/50 Polycotton liner. 9.8" length. 144 per case
- Size: S - XL Color Combo:: Gray/Blue or Gray/Black

Rating: Abrasion ** Cut * Tear **** Puncture **

Stock #	Description
ATS300BLKTS.....	Work Glove Blk Tag Sm
ATS300BLKTM	Work Glove Blk Tag Md
ATS300BLKTL.....	Work Glove Blk Tag Lg
ATS300BLKTXL...	Work Glove Blk Tag XL
ATS300S	Work Glove Blue Sm
ATS300M.....	Work Glove Blue Md
ATS300L.....	Work Glove Blue Lg
ATS300XL.....	Work Glove Blue XL
ATS300TS.....	Work Glove Blue Tag Sm
ATS300TM	Work Glove Blue Tag Md
ATS300TL.....	Work Glove Blue Tag Lg
ATS300TXL.....	Work Glove Blue Tag XL



300

Atlas® X-Grip

Heavy duty Work Glove

- Slightly thicker palm than 300 with reinforced thumb crotch.
 - Increases durability up to 3 times in key wear areas.
 - 50/50 polycotton liner & machine washable. 9.8" length
- Size: S - XL Color Combo: Gray/Black
- Ratings: Abrasion *** Cut * Tear **** Puncture **

Stock #	Description
ATS330M.....	H.D. Regrip Blk Md
ATS330L.....	H.D. Regrip Blk Lg
ATS330XL.....	H.D. Regrip Blk XL
ATS330TM	H.D. Regrip Blk Tag Md
ATS330TL.....	H.D. Regrip Blk Tag Lg
ATS330TXL.....	H.D. Regrip Blk Tag XL



330

Atlas® Fit Extra

Construction, General Purpose Work.

- Latex palm with additional thin coating covering the knuckles.
- This adds extra protection to back of the hand.
- Curved shape allows hands to flex & is machine washable.
- 50/50 Polycotton liner. 9.8" length.

Size: S - XL Color Combo: Gray/Blue. 144 per case.

Ratings: Abrasion ** Cut * Tear **** Puncture **

Stock #	Description
ATS305S	Blue Coatd Back Sm
ATS305M.....	Blue Coatd Back Md
ATS305L.....	Blue Coatd Back Lg
ATS305XL.....	Blue Coatd Back XL



305

Atlas® Nitrile Fit

- Nitrile palm increases abrasion & puncture resistance, and oil resistance.
 - Rough grip & breatheable open back.
 - Machine wash 50/50 Polycotton liner. 9.8" length
- Size: S - XL Color Combo: Gray/Green
- Ratings: Abrasion**** Cut ** Tear *** Puncture*

Stock #	Description
ATS350S	Glove Nitrile Palm Sm
ATS350M.....	Glove Nitrile Palm Md
ATS350L.....	Glove Nitrile Palm Lg
ATS350XL.....	Glove Nitrile Palm XL



350



Atlas® Therma Fit

All around work Glove like ATS300, but for colder climates.

- Garden & Landscape, Agriculture, Cold Storage/Freezer
 - Latex palm, rough grip helps handle wet & slippery objects
 - Napped acrylic liner provides warmth and cushioning.
 - Liner: 50% Acrylic, 25% Polyester, 25% Cotton 9.8" length
- Size: S - XL Color Combo: Gray/Gray. 144 per case.
- Ratings: Abrasion ** Cut ** Tear **** Puncture **

Stock #	Description
ATS451S	Therma Fit Gray Sm
ATS451M.....	Therma Fit Gray Md
ATS451L.....	Therma Fit Gray Lg
ATS451XL.....	Therma Fit Gray XL
ATS451TS.....	Therma Gry Tag S
ATS451TM	Therma Gry Tag M
ATS451TL.....	Therma Gry Tag L
ATS451TXL.....	Therma Gray Tag XL



451

Atlas® Garden Glove

Slightly thinner latex palm for added dexterity.

- Ergonomic shape helps minimize hand fatigue.
- Latex palm provides great grip.
- Open back & machine washable. 144 per case.
- 50/50 Polycotton liner. 9.8" length.

Size: XS - XL Color Combo: Yellow/Green

Ratings: Abrasion ** Cut * Tear **** Puncture **

Stock #	Description
ATS310XS	Glove Work Green XS
ATS310S	Glove Work Green Sm
ATS310M	Glove Work Green Md
ATS310L	Glove Work Green Lg
ATS310XL	Glove Work Green XL
ATS310TXS	Glove Work Green Tagged XS
ATS310TS	Glove Work Green Tagged Sm
ATS310TM	Glove Work Green Tagged Md
ATS310TL	Glove Work Green Tagged Lg
ATS310TXL	Glove Work Green Tagged XL



310

Clothing



370

Atlas® Nitrile Fit

Ergonomic shape with superior flexibility. New extended cuff. Gardening, General Work Glove, Landscaping,

- Thin nitrile coating is durable yet allows hands to flex.
- Open back & machine washable. 9" length.

Size: XS - XL

Ratings: Abrasion **** Cut * Tear ** Puncture*

Stock #	Description
ATS370ALEC	Garden Glove Aqua Large
ATS370ALTEC	Garden Glove Aqua Large w/Tag
ATS370AMEC	Garden Glove Aqua Medium
ATS370AMTEC	Garden Glove Aqua Medium w/Tag
ATS370ASEC	Garden Glove Aqua Small
ATS370ASTE	Garden Glove Aqua Small w/Tag
ATS370BLEC	Garden Glove Blue Lg Ext-cuff
ATS370BLTEC	Garden Glove Blue Ec w/Tag Lg
ATS370BMEC	Garden Glove Blue Md Ext-cuff
ATS370BMTEC	Garden Glove Blue Ec w/Tag Md
ATS370BSEC	Garden Glove Blue Sm Ext-cuff
ATS370BSTEC	Garden Glove Blue Ec w/Tag Sm
ATS370FLEC	Garden Glove Fuchsia Lg Ext-cuff
ATS370FLTEC	Garden Glove Fuchsia Lg w/Tag Lg
ATS370FMTEC	Garden Glove Fuchsia Md Ext-cuff
ATS370FMTEC	Garden Glove Fuchsia Ec w/Tag Md
ATS370FSE	Garden Glove Fuchsia Sm Ext-cuff
ATS370FSTEC	Garden Glove Fuchsia Ec w/Tag Sm
ATS370GLEC	Garden Glove Green Lg Ext-cuff
ATS370GLTEC	Garden Glove Green Ec w/Tag Lg
ATS370GMTEC	Garden Glove Green Md Ext-cuff
ATS370GMTEC	Garden Glove Green Ec w/Tag Md
ATS370GSEC	Garden Glove Green Sm Ext-cuff
ATS370GSTEC	Garden Glove Green Ec w/Tag Sm
ATS370MLEC	Garden Glove Mango Large
ATS370MLTEC	Garden Glove Mango Large w/Tag
ATS370MMEC	Garden Glove Mango Medium
ATS370MMTEC	Garden Glove Mango Med w/Tag
ATS370MSEC	Garden Glove Mango Small
ATS370MSTEC	Garden Glove Mango Small w/Tag
ATS370PLEC	Garden Glove Purple Lg Ext-cuff
ATS370PLTEC	Garden Glove Purple Ec w/Tag Lg
ATS370PMEC	Garden Glove Purple Md Ext-cuff
ATS370PMTEC	Garden Glove Purple Ec w/Tag Md
ATS370PSEC	Garden Glove Purple S Ext-cuff
ATS370PSTEC	Garden Glove Purple Ec w/Tag Sm
ATS370PXSEC	Garden Glove Purple Xs Ext-cuff



372

Atlas® Nitrile Coated

Uses: Small Parts Assembly, Inspection, Light Fabrication, Tool Handling, Automotive, etc.

- Lint free nylon liner. Color White/Grey
- Fully coated 100% nitrile adds protection on back of hand.
- Nylon liner, knit cuff. 9.4" length. 144 per case.

Ratings: Abrasion *** Cut * Tear *** Puncture *

Stock #	Description
ATS372S	Nitrile Kntcuff Sm
ATS372M	Nitrile Kntcuff Med
ATS372L	Nitrile Kntcuff Lrg
ATS372XL	Nitrile Kntcuff XL
ATS372TM	Nitril Kntcuf Tag Med
ATS372TL	Nitril Kntcuf Tag Lrg
ATS372TXL	Nitril Kntcuf Tag XL

Atlas® Assembly Grip Lite

Uses: Small Parts Assembly, Inspection, Light Fabrication, Tool Handling, Automotive, etc.

- Offers thinnest nitrile coating available on any glove.
- Helps maximize dexterity & feel.
- Nylon liner w/open back. 9.8" length.

Size: S - XL Color Combo: Blue/White

Ratings: Abrasion *** Cut * Tear *** Puncture *

Stock #	Description
ATS265S	Assembly Grip Lite Sm
ATS265M	Assembly Grip Lite Med
ATS265L	Assembly Grip Lite Lrg
ATS265XL	Assembly Grip Lite XL



265



BO500

Atlas® Breeze

Uses: Small Parts Assembly, Inspection, Light Fabrication, Tool Handling, Automotive, Packaging - Open back.

- Lint free nylon liner & breathable polyurethane coating.
- Provides for maximum dexterity & feel. 9.0 length.

Size: S - XL Color Combo: Black/Gray

Ratings: Abrasion *** Cut * Tear *** Puncture *

Stock #	Description
ATSBO500BLKS	Poly Grip Blk Sm
ATSBO500BLKM	Poly Grip Blk Med
ATSBO500BLKL	Poly Grip Blk Lrg
ATSBO500BLKXL	Poly Grip Blk XL

Clothing



Chemical Resistant Gloves - Atlas



620

Atlas® PVC Vinylove

Uses: Fish processing, Commercial Fishing

- Seamless cotton liner for comfort.
- Double-dipped PVC for oil resistance/flexibility.
- Rough grip. 12" length.

Size: S - XXL

Color: Orange

Ratings: Abrasion *** Cut * Tear ** Puncture *

Stock #	Description
ATS620TS	PVC Glove Orange Tagged Sm
ATS620TM	PVC Glove Orange Tagged Md
ATS620TL	PVC Glove Orange Tagged Lg
ATS620TXL	PVC Glove Orange Tagged XL
ATS620TXXL	PVC Glove Orange Tagged XXL



660

Atlas® Oil Proof PVC

- Triple-dipped PVC for adds durability & oil resistance.
- Seamless cotton liner & rough grip.
- Ergonomic shape: flexible & reduces hand fatigue. 12" length.

Ratings: Abrasion **** Cut * Tear ** Puncture *

Stock #	Description
ATS660TS	PVC Glove Blue Oil Proof Tag Sm
ATS660TM	PVC Glove Blue Oil Proof Tag Md
ATS660TL	PVC Glove Blue Oil Proof Tag Lg
ATS660TXL	PVC Glove Blue Oil Proof Tag XL
ATS660TXXL	PVC Glove Blue Oil Proof Tag XXL



481

Atlas® Fleece Lined PVC

- Triple-dipped PVC, same as Atlas 660 but with a warm fleece lining.
- Chemical resistant with ergonomic shape that reduces hand fatigue, increases flexibility. 12" length.

Ratings: Abrasion *** Cut * Tear ** Puncture *

Stock #	Description
ATS481S	PVC Glove Lined Blue Sm 72/cs
ATS481M	PVC Glove Lined Blue Md 72/cs
ATS481L	PVC Glove Lined Blue Lg 72/cs
ATS481XL	PVC Glove Lined Blue XL 72/cs



720

Atlas® Nitrile

Uses: Chemical Handling*, Construction, Janitorial, Commercial Fishing, Diving & Salvage, Fish Processing, Concrete, Petro Chemicals, Tile Work, Assembly, Refining, Maintenance, Gardening, Refining

- Seamless Belima liner wicks away moisture.
- Nitrile coating resists chemicals, abrasion & punctures.
- Optimum chemical resistance & great dexterity.
- Ergonomic shape with rough grip. 12" length.

Ratings: Abrasion *** Cut * Tear *** Puncture **

Stock #	Description
ATS720S	Glove Nitrile Blue Sm 144/cs
ATS720M	Glove Nitrile Blue Md 144/cs
ATS720L	Glove Nitrile Blue Lg 144/cs
ATS720XL	Glove Nitrile Blue XL 144/cs
ATS720XXL	Glove Nitrile Blue 2XL

* See Chemical Resistance Guide page 602





Insulated Atlas Gloves

Atlas® PVC Freezer Glove

Uses: Freezer/Cold Storage, Commercial Fishing, Agriculture, Construction, Deep Sea Diving, Chemical Handling**

- Insulated double-dipped PVC.
- Chemical resistant with rough grip.
- 11.8" length. 72 per case

Ratings: Abrasion *** Cut ** Tear ** Puncture *

Stock #	Description
ATS460S	PVC Glove Orange Sm Insul
ATS460M	PVC Glove Orange Med Insul
ATS460L	PVC Glove Orange Lrg Insul
ATS460XL	PVC Glove Orange XL Insul



460



Atlas® PVC Oil Proof Freezer Glove

Uses: Freezer/Cold Storage, Commercial Fishing, Agriculture, Construction, Deep Sea Diving, Chemical Handling**

- Oil Resistant. Liquid proof with added durability.
- Insulated triple-dipped PVC.
- Stays flexible in low temperatures.
- Chemical resistant with rough grip. 11.8" length. 72 per case.

Ratings: Abrasion *** Cut ** Tear ** Puncture *

Stock #	Description
ATS490BLKM	PVC Glove Black Med Insul
ATS490BLKL	PVC Glove Black Lrg Insul
ATS490BLKXL	PVC Glove Black XL Insul



490

Atlas® PVC Freezer Glove with Removable Liner

Uses: Freezer/Cold Storage, Commercial Fishing, Agriculture, Construction, Deep Sea Diving, Chemical Handling**

- Insulated double-dipped PVC with removable, brushed Acrylic liner which helps with laundering and drying. Liquid proof.
- Stays flexible in low temps.
- Chemical resist with rough grip. 11.8" length. 60 per case

Ratings: Abrasion*** Cut ** Tear ** Puncture *

Stock #	Description
ATS465M	PVC Glove Orange Med
ATS465L	PVC Glove Orange Lrg
ATS465XL	PVC Glove Orange XL



465

Freezer Glove with Removable Liner

Uses: Freezer/Cold Storage, Commercial Fishing, Agriculture, Construction, Deep Sea Diving, Chemical Handling*

- Insulated triple-dipped PVC, with removable brushed Acrylic liner, helps with laundering and drying. Liquid proof with added durability.
- Stays flexible in low temperatures.
- Chemical resistant with rough grip. 11.8" length. 60 per case

Ratings: Abrasion *** Cut ** Tear ** Puncture *

Stock #	Description
ATS495M	PVC Glove Blue
ATS495L	PVC Glove Blue
ATS495XL	PVC Glove Blue



495



* See Chemical Resistance Guide page 602

Clothing



Cut Resistant Gloves



Specialty Gloves - Atlas



Atlas® Kevlar®/Nitrile Palm

- Seamless cut resistant Kevlar® liner.
- Tough, puncture resistant nitrile coating.
- Ergonomic shape increases flexibility.
- Nitrile coating: excellent abrasion/oil resistance. 9.5" length.
- Color: Yellow/Green. 144 per case.
- Ratings: Abrasion *** Cut **** Tear **** Puncture ****

KV350

Stock #	Description
ATSKV350S	Kevlar with Nitrile Palm Sm
ATSKV350M	Kevlar with Nitrile Palm Med
ATSKV350L	Kevlar with Nitrile Palm Lrg
ATSKV350XL	Kevlar with Nitrile Palm XL



Atlas® Kevlar®/Latex Palm

- Cut & slash resistant Kevlar® liner.
- Tough, puncture resistant latex coating.
- Ergonomic shape for increased flexibility.
- Latex coating offers excellent grip. 9.5" length.
- Size: M - XL Color Combo: Yellow/Blue
- Ratings: Abrasion *** Cut **** Tear **** Puncture ****

KV300

Stock #	Description
ATSKV300M	Glove Kevlar Latex Palm Med
ATSKV300L	Glove Kevlar Latex Palm Lrg
ATSKV300XL	Glove Kevlar Latex Palm XL

Atlas® Assembly Grip Glove

- Multi-purpose chemical & oil resistant work glove
Workers are able to perform detailed tasks with ease.
Ergonomic shape with superior flexibility.
Uses: Masonry, Construction, Gardening, Assembly Line,
Small Parts Assembly, General Work Glove, Landscaping,
Mechanical, Automotive, Packaging, Tool Handling,
- Lint free nylon liner protects parts from contamination.
 - Thin nitrile coating is durable yet allows hands to flex.
 - Open back & machine washable. 9" length.
- Color: Black/Gray.
Ratings: Abrasion **** Cut * Tear ** Puncture*



370B

Stock #	Description
ATS370BLKS	Glove Assy Grip Blk Sm
ATS370BLKM	Glove Assy Grip Blk Med
ATS370BLKL	Glove Assy Grip Blk Lrg
ATS370BLKXL	Glove Assy Grip Blk XL
ATS370BLKTS	Glove Assy Grip Blk Tagged Sm
ATS370BLKTM	Glove Assy Grip Blk Tagged Med
ATS370BLKTL	Glove Assy Grip Blk Tagged Lrg
ATS370BLKTXL	Glove Assy Grip Blk Tagged XL

* See Chemical Resistance Guide page 602

Atlas® Long Sleeve PVC

- Double-dipped PVC with heat-sealed, leakproof vinyl sleeve.
- Seamless cotton liner adds comfort.
- Chemical resistant with rough grip. 26" length.
- Size: S - XL Color: Orange with white sleeve. 72 per case
- Ratings: Abrasion *** Cut * Tear ** Puncture *

Stock #	Description
ATS640S	Long Glove PVC Sm
ATS640M	Long Glove PVC Med
ATS640L	Long Glove PVC Lrg
ATS640XL	Long Glove PVC XL

640



Long Sleeve Oil Proof PVC

- Commercial fishing, environmental cleanup.
- Triple-dipped PVC w/heat-sealed, leakproof vinyl sleeve.
 - A seamless cotton liner adds comfort.
 - Added chemical/oil resistance with rough grip. 26" length.
 - Ratings: Abrasion *** Cut * Tear ** Puncture *

Stock #	Description
ATS690M	Atlas Glove PVC Blue Med
ATS690L	Atlas Glove PVC Blue Lrg
ATS690XL	Atlas Glove PVC Blue XL

690



Atlas® Nitrile Long Sleeve Gloves

- Commercial fishing, food process/handle.,
Great dexterity and comfort.
- Double-dipped nitrile with rough-grip. Leakproof sleeve,
 - Flexible coating, chemical resistance, cotton liner.
 - Nitrile coating, abrasion and puncture resistant.
 - Rough-grip. 26" length. 72 per case
 - Size: M - XL Color: Yellow
 - Ratings: Abrasion **** Cut * Tear * Puncture *

Stock #	Description
ATS772M	Long Nitrile Glove Med
ATS772L	Long Nitrile Glove Lrg
ATS772XL	Long Nitrile Glove XL

772



Un-Supported PVC Glove

- Janitorial, Maintenance, Assembly, Manufacturing.
- Clean packed unlined 11 mil PVC.
 - Patented slip on construction. 11.8" Length. 240 per case
 - Ratings: Abrasion*** Cut Tear Puncture

Stock #	Description
ATSBO700S	Glove PVC White Sm
ATSBO700M	Glove PVC White Md
ATSBO700L	Glove PVC White Lg
ATSBO700XL	Glove PVC White XL

BO700



Clothing



* See Chemical Resistance Guide Below for all Atlas/Showa Gloves

Atlas / Showa - Chemical Resistance Guide

	720	660	KV660	520	B0700	690	460	490
ABS DETERGENT	NT	●	●	●	●	●	●	●
ACETALDEHYDE	NT	◐	◐	◐	◐	◐	◐	◐
ACETIC ACID	◐	●	●	●	●	●	●	●
ACETONE	◐	◐	◐	◐	◐	◐	◐	◐
AMMONIA LIQUID 28%	●	●	●	●	●	●	●	●
ANILINE	NT	◐	◐	NT	NT	◐	NT	◐
BENZENE	◐	◐	◐	◐	◐	◐	◐	◐
BUTHYL ALCOHOL	NT	●	●	◐	◐	●	◐	●
CYCLOHEXANOL	●	●	●	NT	NT	●	NT	NT
DIBUTYL PHTHALATE	●	◐	◐	NT	NT	◐	NT	NT
DIETHYL PHTHALATE	NT	◐	◐	◐	◐	◐	◐	◐
DIMETHYL GLYCOL	◐	◐	◐	NT	NT	◐	NT	◐
DIOCYL PHTHALATE	NT	●	●	◐	◐	●	◐	●
DMF	NT	◐	◐	◐	◐	◐	◐	◐
ETHYL ALCOHOL	◐	●	●	◐	◐	●	◐	●
ETHYLENE SULFOXIDE	●	●	●	●	●	●	●	●
FORMALDEHYDE	NT	●	●	NT	NT	●	NT	NT
GASOLINE	●	◐	◐	◐	◐	◐	◐	◐
GLYCERIN	NT	●	●	●	●	●	●	●
HEXANE	●	◐	◐	NT	NT	◐	NT	NT
HYDRAZINE 65%	NT	●	●	NT	NT	●	NT	NT
HYDROCHLORIC ACID 20%	●	●	●	●	●	●	●	●
HYDROCHLORIC ACID 37%	●	●	●	◐	◐	●	◐	●
HYDROFLUORIC ACID 48%	NT	◐	◐	◐	◐	◐	◐	◐
HYDROGEN PEROXIDE	NT	●	●	●	●	●	●	●
ISOPROPYL ALCOHOL	●	◐	◐	NT	NT	◐	NT	◐
KEROSENE	●	●	●	◐	◐	●	◐	●
MBK (METHYL BUTHYL KETONE)	◐	◐	◐	◐	◐	◐	◐	◐
MEK (METHYL ETHYL KETONE)	◐	◐	◐	◐	◐	◐	◐	◐
METHYL ALCOHOL	◐	◐	◐	◐	◐	◐	◐	◐
METHYLENE CHLORIDE	◐	◐	◐	◐	◐	◐	◐	◐
NAPHTHA	●	●	●	NT	NT	●	NT	●
NITRIC ACID 20%	NT	●	●	●	●	●	●	●
NITRIC ACID 66%	NT	◐	◐	◐	◐	◐	◐	◐
OLEIC ACID	NT	●	●	●	●	●	●	●
PENTANE	●	◐	◐	NT	NT	◐	NT	◐
PHOSPHORIC ACID	●	●	●	NT	NT	●	NT	●
POTASSIUM HYDROXIDE	●	●	●	●	●	●	●	●
SODIUM HYDROXIDE 20%	●	●	●	●	●	●	●	●
STODDARD SOLVENT	●	●	●	NT	NT	●	NT	●
SULPHURIC ACID 20%	◐	●	●	●	●	●	●	●
SULPHURIC ACID 80%	◐	◐	◐	◐	◐	◐	◐	◐
TOLUENE	◐	◐	◐	◐	◐	◐	◐	◐
TRICHLORETHYLENE	◐	◐	◐	◐	◐	◐	◐	◐
TURPENTINE OIL	●	●	●	NT	NT	●	NT	NT
XYLENE	◐	◐	◐	◐	◐	◐	◐	◐

Excellent

Good

Acceptable

Not Recommended

NT

Not Tested

Clothing

* Note: This should only be used as a guide to Chemical Resistance. Resistance is affected by factors such as temperature, concentration etc. We recommend that a suitability test be performed prior to use. Permeation may not be visible to wearer.





DORFMAN  PACIFIC



Greek Fisherman Hat

Traditional woolblend cap - Braid trim on front.
Color: Black, Gray, Navy - Sturdy, looks great.

Stock #	Description	Color	Size
DRF743BLKLCap Greek Fish Black	LG	
DRF743BLKMCap Greek Fish Black	MD	
DRF743BLKSCap Greek Fish Black	SM	
DRF743BLKXLCap Greek Fish Black	XL	
DRF743GRYLCap Greek Fish Gray	LG	
DRF743GRYMCap Greek Fish Gray	MD	
DRF743GRYSCap Greek Fish Gray	SM	
DRF743GRYXLCap Greek Fish Gray	XL	
DRF743LCap Greek Fish Navy	LG	
DRF743MCap Greek Fish Navy	MD	
DRF743SCap Greek Fish Navy	SM	
DRF743XLCap Greek Fish Navy	XL	



Traditional "Ballard Stetson"

Here's a cap worn on halibut boats, since turn of the century / Handsome look.
Color: Pure White.

Stock #	Sizes
DRF2K-MMedium Cap
DRF2K-LLarge Cap
DRF2K-XLX-Large Cap

Radar Hat

Acrylic knit - One size fits all.
Color Combos: Assorted Black/Copper - Black/Grey
Navy/Olive - Black/Olive

Stock #	Description
DRFK80Hat Radar Acrylic w/ Bill



Micro-Fleece Earband

One size fits all.
Color: Black

Stock #	Description
DRF152FE-BLKEarband Microfleece Black

Watch Caps

Watch Cap - Tight Knit

Acrylic and Thinsulate insulation.
Best seller. One size fits all.
Colors: Assorted Brown, Dark Navy, Copper, Charcoal, Maroon, Olive.

Stock #	Description
DRF166TWatch Cap Tight Knit



Chinook Hat

Micro-Fleece

Stock #	Description
STC1682Hat Chinook Pt 100 Mic Fl



Fleece Skully Hat

Acrylic with fleece lining.
Colors: Assorted Black, Navy, Burgundy, Olive.

Stock #	Description
DRFK42Hat Fleece Lined Acrylic



Skully Rib Hat

Acrylic best seller - One size fits all.
Colors: Assorted Black, Navy, Burgundy, Charcoal, Khaki.

Stock #	Description
DRFK49Hat Rib Skully



Beanie Watch Cap

Striped Acrylic / Fleece lining.
Colors: Assorted Black, Navy, Grey.

Stock #	Description
DRFK44Watch Cap Acrylic/Flc Lined



Acrylic Watch Cap

Acrylic, all purpose watch cap.
One size fits all. Colors: Black

Stock #	Description
DRF161Black Watch Cap

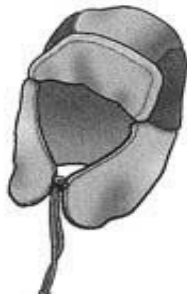


Cuff Cap - Watch Cap

Acrylic blend with MicroFleece lining.
Color: Oatmeal

Stock #	Description
DRFK52Watch Cap Acrylic Flc/Lin





Kodiak Fleece Hat - Grundéns

Versatile hat of soft comfortable polyester fleece. Large earflaps & extended neck protection.

Color Combo: Grey & Black.

Stock #	Description	Size
GRUK100GRYS	Kodiak Fleece	Sm
GRUK100GRYM	Kodiak Fleece	Med
GRUK100GRYL	Kodiak Fleece	Lrg
GRUK100GRYXL	Kodiak Fleece	XL



GoatRoper

2 layers of polyester fleece. Reversible. Dries very quickly! Great ski hat or liner under foul-weather hood.

Color Combo: Assorted

Stock #	Description	Size
STSGROS	Hat Goat Roper	Sm
STSGROM	Hat Goat Roper	Med
STSGROL	Hat Goat Roper	Lrg
STSGROXL	Hat Goat Roper	XL



Nerf Herder Hat - Stormy Seas

3-ply Supplex shell. Wind protection. Pile fleece lining - Chin straps secured with velcro strip, adds warmth & security. Colors: Navy, Red

Navy

Stock #	Description	Color	Size
STSNH060NS	Hat Nerf Herder	Navy	Sm
STSNH060NM	Hat Nerf Herder	Navy	Med
STSNH060NL	Hat Nerf Herder	Navy	Lrg
STSNH060NXL	Hat Nerf Herder	Navy	XL

Red

Stock #	Description	Color	Size
STSNH060RS	Hat Nerf Herder	Red	Sm
STSNH060RM	Hat Nerf Herder	Red	Med
STSNH060RL	Hat Nerf Herder	Red	Lrg
STSNH060RXL	Hat Nerf Herder	Red	XL

Balaclava

Thermostat Balaclava

Stock #	Description
STC1055	Black



Micro-Fleece Face Mask

Universal size - fits all. Colors: Black, Navy, Dark Grey

Stock #	Description
DRF115F	Mask Micro Fleece



Face masks

Extreme Face Mask

Keeps face warm on the really cold days.

Stock #	Size
SEI6820M	M
SEI6820L	L
SEI6820XL	XL



Fleece-Lined Face Mask

Stock #	Size
SEI6810L	L
SEI6810XL	XL



Clothing

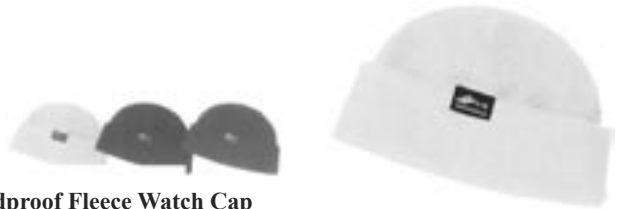




Wool Watch Cap

One size fits all. Colors: Navy

Stock #	Description
STC9934	Watch Cap Wool Navy



Windproof Fleece Watch Cap

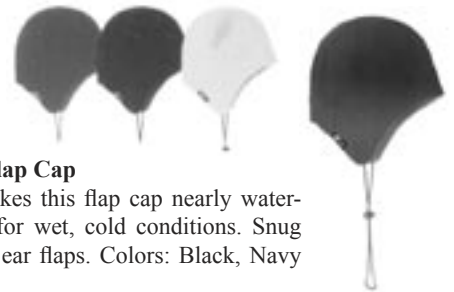
Watch cap made from windproof fleece is near waterproof. Colors: Black, Navy or Hi-Vis Yellow

Stock #	Color	Size
GRUWPFWCBS/M	Black	Sm/Med
GRUWPFWCBL/XL	Black	Lrg/XL
GRUWPFWCNS/M	Navy	Sm/Med
GRUWPFWCNL/XL	Navy	Lrg/XL
GRUWPFWCYS/M	Yellow	Sm/Med
GRUWPFWCYL/XL	Yellow	Lrg/XL

Watch Cap

100 % wool military issue caps - Knit to government specs. Made in USA - **Color:** Black.

Stock #	Description
BRN61-391	Watch Cap 100% Wool Black



Windproof Fleece Flap Cap

Windproof fleece makes this flap cap nearly waterproof and suitable for wet, cold conditions. Snug fitting with effective ear flaps. Colors: Black, Navy or Hi-Vis Yellow

Stock #	Color	Size
GRUWPFFCBS/M	Black	Sm/Med
GRUWPFFCBL/XL	Black	Lrg/XL
GRUWPFFCNS/M	Navy	Sm/Med
GRUWPFFCNL/XL	Navy	Lrg/XL
GRUWPFFCYS/M	Yellow	Sm/Med
GRUWPFFCYL/XL	Yellow	Lrg/XL

Howler Skully Hat

Ultimate warmth & cold protection, thermal regulation.

- 98% wind proof, waterproof & breathable.
- Soft wicking, Powerdry fleece interior.
- Snug comfortable contoured fit.
- Durable water repellancy - Machine washable.

Stock #	Description
STC1689	Skully Hat



Howler Climate Guard - Balaclava Windblock

Ultimate warmth & cold protection, thermal regulation.

- 98% wind proof, waterproof & breathable.
- Soft wicking, Powerdry fleece interior
- Snug comfortable contoured fit.
- Durable water repellancy - Machine washable.

Stock #	Description
STC1691	Balaclava Windblock

