

Crab



Crab

Crab Ropes						
Type	Brand	Size	Tensile Strength	Weight/coil	Stock #	
Dungeness Gear	Floating Line	Blue Steel Poly	5/16"	1,850 Min, 2,200 Max	37 lbs	RPE516BSP-CR
			3/8"	2,850 Min, 3,350 Max	46 lbs	RPE38BSP-CR
			7/16"	3,800 Min, 4,200 Max	55 lbs	RPE716BSP-CR
			1/2"	4,300 Min, 5,000 Max	69 lbs	RPE12BSP-CR
	Floating Line	Hi-Man	5/16"	1,850 lbs	30 lbs	RPE516HM-CR
			3/8"	2,900 lbs	45 lbs	RPE38HM-CR
			7/16"	3,500 lbs	52 lbs	RPE716HM-CR
			1/2"	4,200 lbs	65 lbs	RPE12HM-CR
		Ultra Blue	5/16"	2,600 lbs	32 lbs	SAM516UB-CR
			3/8"	3,600 lbs	43 lbs	SAM38UB-CR
			7/16"	4,400 lbs	53 lbs	SAM716UB-CR
			1/2"	5,300 lbs	65 lbs	SAM12UB-CR
	Sinking Line	SSR-100	3/8"	3,500 lbs	59 lbs	SAM38SSR-CR
			7/16"	3,700 lbs	71 lbs	SAM716SSR-CR
			1/2"	4,800 lbs	87 lbs	SAM12SSR-CR
King Crab Gear	Floating Line	Blue Steel Poly	9/16"	5,500 Min, 6,500 Max	95 lbs	RPE916BCP-CR
			5/8"	7,000 Min, 8,200 Max	135 lbs	RPE916BCP-CR
			3/4"	9,500 Min, 11,000 Max	165 lbs	RPE916BCP-CR
		Hi-Man	9/16"	5,100 lbs	85 lbs	RPE916HM-CR
			5/8"	6,350 lbs	115 lbs	RPE58HM-CR
			3/4"	8,700 lbs	145 lbs	RPE34HM-CR
			13/16"	9,500 lbs	175 lbs	RPE1316HM-CR
		Ultra Blue	7/8"	11,500 lbs	215 lbs	RPE78HM-CR
			9/16"	7,700 lbs	94 lbs	SAM916UB-CR
	3/4"		12,500 lbs	163 lbs	SAM34UB-CR	
	Sinking Line	SSR-100	13/16"	14,500 lbs	172 lbs	SAM1316UB-CR
			9/16"	6,500 lbs	118 lbs	SAM916SSR-CR
			5/8"	9,300 lbs	168 lbs	SAM58SSR-CR
	Bridle Line	Samson	3/4"	10,400 lbs	187 lbs	SAM34SSR-CR
1"			16,300 lbs	113 lbs (600')	SAM1UB-BR	
Trailer Line	Samson	1-1/8"	20,500 lbs	147 lbs (600')	SAM118UB-BR	
		5/8"	5,800 lbs	96 lbs (1200')	SAM58UB-TR	



Hi-Man Crab Rope

- 100% Manline/Danline
- Coextrusion Polyolefin, super strong.
All 100% Manline or Danline.
- Color: Gray with black and blue tracers
- 10-20% stronger than polypro crabline
- Floats
- Higher abrasion resistance than polypropylene.
- Less stretch than polypropylene.



Stock #	Size
RPE516HM-CR	5/16"
RPE38HM-CR	3/8"
RPE716HM-CR	7/16"
RPE12HM-CR	1/2"
RPE916HM-CR	9/16"
RPE58HM-CR	5/8"
RPE34HM-CR	3/4"
RPE1316HM-CR	13/16"
RPE78HM-CR	7/8"

Blue Steel Crab Rope



- Coextrusion Polyolefin - Super Strong
- Very high strength
- Light weight
- Color: Aqua blue with dark blue tracers
- Longer lengths available up to 3600'

Stock #	Size
RPE516BSP-CR	5/16"
RPE38BSP-CR	3/8"
RPE716BSP-CR	7/16"
RPE12BSP-CR	1/2"
RPE916BSP-CR	9/16"
RPE58BSP-CR	5/8"
RPE34BSP-CR	3/4"
RPE1316BSP-CR	13/16"
RPE78BSP-CR	7/8"



Samson SSR Crab Rope

Code: #215

Long wearing sinking line comprised of Ultra Blue strand cores surrounded by yarns made of polyester plied over Ultra fiber.

Characteristics:

- Firm construction minimizes hocking when loaded & unloaded.
- Good abrasion resistance.

Color: White with green and red tracer

Stock #	Diameter	WEIGHT Lb. Per/100 Ft.	Average STRENGTH	Put-Up
SAM38SSR-CR.....	3/8"	4.9 Lb. ...	3,500 Lb.	1200 Ft.
SAM716SSR-CR...	7/16"	5.7 Lb. ...	3,700 Lb.	1200 Ft.
SAM12SSR-CR.....	1/2"	7.3 Lb. ...	4,800 Lb.	1200 Ft.
SAM916SSR-CR...	9/16"	9.8 Lb. ...	6,500 Lb.	1200 Ft.
SAM58SSR-CR.....	5/8"	14.0 Lb. ..	9,300 Lb.	1200 Ft.
SAM34SSR-CR.....	3/4"	15.6 Lb. ..	10,400 Lb.	1200 Ft.



Samson Ultra Blue Crab Rope

Code: #133 & #135

High strength & excellent wearing floating line made of Ultra Blue fiber.

Characteristics:

- 30% stronger than standard polypropylene.
- Excellent grip in haulers & blocks. Balanced uniform construction.
- Superior UV.resistance.

Color: Blue with green and red tracer

Stock #	Diameter	WEIGHT Lb. Per/100 Ft.	Average STRENGTH	Put-Up
SAM516UB-CR.....	5/16"	5.3 Lb.	2,600 Lb.	1200 Ft.
SAM38UB-CR.....	3/8"	6.6 Lb.	3,600 Lb.	1200 Ft.
SAM716UB-CR.....	7/16"	3.9 Lb.	2,000 Lb.	1200 Ft.
SAM12UB-CR.....	1/2"	8.1 Lb.	5,300 Lb.	1200 Ft.
SAM916UB-CR.....	9/16"	11.7 Lb. ..	7,700 Lb.	1200 Ft.
SAM58UB-CR.....	5/8"	15.0 Lb. ..	9,400 Lb.	1200 Ft.
SAM34UB-CR.....	3/4"	20.2 Lb. ..	12,500 Lb.	1200 Ft.
SAM1316UB-CR...	13/16"	21.5 Lb. ..	14,500 Lb.	1200 Ft.

Crab

Biodegradable Cotton Twine

(Biocord)

Required by US. Fish & Game in most areas for use in crab & shrimp traps. Sometimes referred to as "rottin' cotton".

Color: White - Comes in 2 Lb.spools.

Stock #	Size	Feet Per/ Lb	Put-Up Pkg.
EVR30COT.....	#30.....	610.....	2 Lb. Spool
EVR60COT.....	#60.....	315.....	2 Lb. Spool
EVR120COT.....	#120.....	155.....	2 Lb. Spool



HP/PacificMaster Soft Lay Corkline

7/16" Soft Lay Corkline

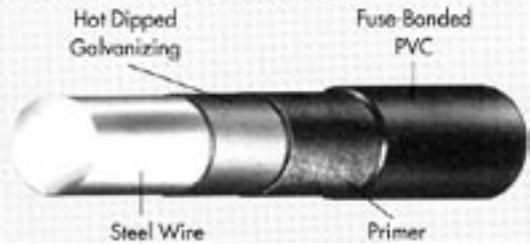
Commonly used for Pot Ties & Door Hinges.

- A braided combination cover of polyolefin and spun nylon with a parallel polyester core. Cover has a longitudinal black hanging line.

Stock #	Length
SAM53302055.....	55 Ftm
SAM53302110.....	110 Ftm



CUT-AWAY VIEW OF SHEPHERD VINYL-COATED WIRE



SHEPHERD PVC-Coated Wire Mesh
Best quality cage wire available:

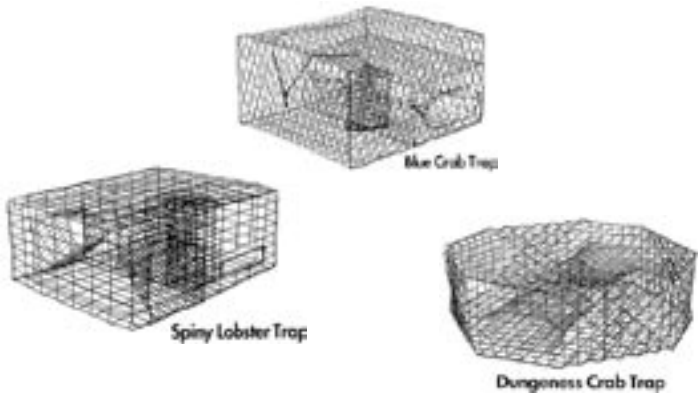
- We start with steel wire that meets or exceeds ASTM A-90 standards.
- Shepherd employs specialized state-of-the-art equipment to weld different gauges.
- Advanced technology guarantees virtually error-free welding every time, producing wire mesh that meets or exceeds ASTM A-185 standards.
- Rigid quality control process includes spot-checking welded wire using an oscilloscope, reveals a “perfect weld profile.”

Welded or hex mesh wire is coated utilizing:

- Exclusive fuse-bonded process where PVC coating adheres to the metal
- Durable coating makes wire extremely corrosion resistant:
Impervious to many chemicals & water migration. No rusting-out from inside.
- Significantly longer lasting than non-coated wire.

Withstands harshest elements: saltwater & roughest use you can give!

Examples of what you can build with Shepherd wire.



Hog Ring Plier

Use for all heavy wire rings, wide jaw.

Stock #	Description
SEY-PLIER	Hog Ring Plier



Taylor C-Ring Plier

For Clinching C-Rings

Stock #
TAY1046



Shepherd wire is sold in full rolls only.
We stock C-rings, pliers, rubber tubing & hooks for door closures.

Shepherd Wire

100 Feet per roll. (Full rolls only).

11 Gauge

Stock#	Mesh Size	Width	Weight/roll
CES333611	3 x 3	36"	

12 Gauge

Stock#	Mesh Size	Width	Weight/roll
CES222412	2 x 2	24"	87 lbs

14 Gauge

Stock#	Mesh Size	Width	Weight/roll
CES111814	1 x 1	18"	74 lbs.
CES112414	1 x 1	24"	99 lbs.
CES113614	1 x 1	36"	148 lbs.

16 Gauge

Stock#	Mesh Size	Width	Weight/roll
CES1122416	1 x 1/2	24"	94 lbs.
CES1123016	1 x 1/2	30"	117 lbs.
CES111816	1 x 1	18"	47 lbs.
CES112416	1 x 1	24"	64 lbs.
CES113616	1 x 1	36"	93 lbs.
CES114816	1 x 1	48"	124 lbs

Shepherd Hardware:

C-Rings (Hog Rings)

Stainless steel.

Stock #	Size
CESCRINGS	Small 3/8"
CESCRINGM	Medium 1/2"
CESCRINGL	Large 3/4"

Black plastic door hooks

Stock #	Length
CESHOOKL	2-5/8"
CESHOOKS	2"

Tubing for door hooks

Sold by the foot.

Stock #	Material
CESTUBING	Tubing

Hog Rings

Slant cut. Sold by the pound. Packed in 50 lb. carton. Approx. 6000 rings per box.

Stock #	Material
SEY-GLV	Galvanized
SEY-SS	Stainless steel



Crab



Tanner Board / Door Hooks

Stainless

Heavy-duty stainless steel wire.
Packaged 50 hooks per package.

Stock #	Size
MWP3DH-1/8	1/8" x 3"
MWP3DH	3/16" x 3"
MWP5DH	3/16" x 5"
MWP6DH	3/16" x 6"



MWP5DH MWP3DH

Non Metallic

Stock#	Description
ECL-DH-WH	White Delrin
ECL-DH-5	5" Nylon Black



Tunnel Ups

Non-Metallic

Proven design & non-metallic material.
2/ per pot. Aims the tunnel entrances upward.
Clips onto middle cross bar of pot.

Stock #
ECLTUNNEL-UP



Escape Rings

Stainless steel construction.

Stock #	Size
MWPER314	3-1/4"
MWPER334	3-3/4"
MWPER4	4"
MWPER414	4-1/4"
MWPER434	4 3/4"
MWPER438	4-3/8"
MWPER5	5"
MWPER512	5-1/2"
MWPER614	6-1/4"



MWPER

Acetone

Stock #	Size
TRY037705	Quart
TRY369611	Gallon



Polyform Buoy Paint

Polyform buoy paint is a flexible vinyl paint.
Designed to remain flexible as buoy expands & contracts. Available in blue liter only.

Stock #	Size
POL42BLL	Liter



Stencils

Alphanumeric stencil sets available in four sizes; 4", 6", 8", & 12".

Stock #	Description
BWC2AN	Alpha & number's 2"
BWC3AN	Alpha & number's 3"
BWC4AN	Alpha & number's 4"
BWC6AN	Alpha & number's 6"
BWC8A	Alphas only 8"
BWC12A	Alphas only 12"
BWC8N	Numbers only 8"
BWC12N	Numbers only 12"



VINYLON

Marker Buoy Coating

This is a solvent based vinyl coating designed for use on PVC buoys & flotation material.

- Vinylon has an excellent adhesion when applied to most vinyls, soft plastics, canvas, & leather.
- Vinylon outlasts most other ways of painting PVC buoys & has been used by Pacific Coast fishermen since 1982.

Stock #	Color	Size
HUMBLUQ	Blue	Quart
HUMBLKQ	Black	Quart
HUMRDQ	Red	Quart
HUMGRQ	Green	Quart
HUMLG	Lime	Gal
HUMLQ	Lime	Quart
HUMOG	Orange	Gal
HUMOQ	Orange	Quart
HUMPURQ	Purple	Quart
HUMRDG	Red	Gal
HUMRDQ	Red	Quart
HUMRHPG	Hot Pink	Gal
HUMRHPQ	Hot Pink	Quart
HUMRLG	Radiant Lime	Gal
HUMRLQ	Radiant Lime	Quart
HUMROG	Radiant Orange	Gal
HUMROQ	Radiant Orange	Quart
HUMRRDG	Radiant Red	Gal
HUMRRDQ	Radiant Red	Quart
HUMTQ	Teal	Quart

Twist On Red Top Bait Jars

White cannister with removeable lid.
Cannister is white; lid is red.
Available with holes. 24/case.

Stock #	Size
TPI2-W/H	2 Quart with Holes
TPI3-W/H	3 Quart with Holes
TPI-L	Lids for above



Scotty Bait Jars

Round plastic jar with screw on lid. Slotted Lid lets bait smell out, keeps sea lice from entering & spoiling the bait: Especially when left for extended periods. 100/Case.



Stock #	Size
SCT650	1/2 liter with lid, white color
SCT652	1/2 liter with lid, fluorescent red in color
SCT651	1 liter with lid, white color
SCT657	1 liter with lid, fluorescent red in color
SCT656	Lid only, fluorescent red
SCT653	Lid only, natural (white)

Morrison Bait Jars

Molded heavy gauge plastic.
Snap on lid. Measures 3" x 6".
Available with or without holes.
Case lot is 125. Weight per case is 35 lbs.

Stock #	Description
SILMOR-N/H-WH	White - No Hole
SILMOR-W/H-WH	White-with 3/8" Hole
SILMOR-N/H-OR	Orange-with No Hole
SIL-LID-N/H	Lid Only



Vaupell Bait Pitchers

Square design: lid is hinged to pitcher.
Pitcher is perforated with holes.

Stock #	Size	Case
VAU2	2 Quart	48
VAU3	3 Quart	42



Poly Bait Bags

Heavy duty poly bait bag.
21" x 45"

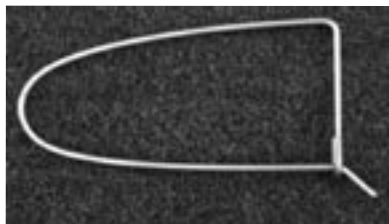
Stock #
AMKBAITBAGPOL



Dungeness Bait Bags

Bait bag. 45" x 11.5"

Stock #
GBTBAIT-DNG



Bait Hooks

A quick & easy method of attaching bait or bait jars to crab pots.

Stock #	Size	Diameter	Width	Length
MWPSBH	Small	1/8"	3-1/2"	6"
MWPMBH	Medium	3/16"	3-1/2"	7"
MWPLBH	Large	3/16"	3-3/4"	8"
MWPXLBH	X-large	3/16"	4"	9-3/4"

Mini Bait Hook

WAGMINI	Mini	1/8"	2-1/2"	4"
---------	------	------	--------	----



Bait Jar Snap

Used in attaching bait jars to crab pots.

Available in stainless steel & galvanized finish.

Stock #	Description
WAG003	5/16" SS Double Loop Snap (pictured)
WAG010	5/16" Galv Dble Loop Snap

Buoy Grommets

Made from inflatable buoy material.

Stock #
ECLBG.....Grommet



Grommets

Available in three sizes, 5/8", 7/8" and 1".

Stock # Size
LPCG5/85/8" small
LPCG7/87/8" large
LPCG11" large



Pot Savers

UV resistant nylon prevents chafing of pot lines. Inside diameter measures 7/8".

Stock #
LPCPS.....7/8" Dia.



Multi-Purpose Basket

Great for hauling, good drainage, sturdy plastic with handles.

Stock # Description
ROPOPB Multi-Purpose Basket.....Orange
SFEP33 ..Multi-Purpose Basket.....Gray



Hog Ring Plier

Use for all heavy wire rings, wide jaw.

Stock # Description
SEY-PLIERHog Ring Plier



Hog Rings

Slant cut. Sold by the pound. Packed in 50 lb. carton. Approx. 6000 rings per box.

Stock # Material
SEY-GLVGalvanized
SEY-SS.....Stainless steel



Heaving Hook

Stainless steel with a 5/8" hole through center for attaching line. 3/8" stock size, 8" overall.

Stock # Description
HMIHH.....SS Heaving Hook



Crab Dump Totes

One piece seamless construction. FDA approved polyethylene. Shipping weight 35 lbs.

Stock # Description Dimensions in inches
BNRDT350Tote31W x 55L x 22 H
BNRDT250Tote30W x 39L x 21 H



Plastic Black Tape

Scotch Vinyl Plastic Electrical Tape Super 33 Plus

- Made of vinyl plastic; has excellent resistance to flame, abrasion, moisture, alkalis, solvents, oil & many acids.
- Gives full electrical & mechanical protection.

Stock # Size Rolls/box
THM06132.....3/4" x 66 ft.10



Scotch Vinyl Plastic Tape No. 88

- An 8.5 mil vinyl tape recommended for cold weather applications
- For use when conventional plastic tapes become brittle & stiff.
- Extra flexibility makes this tape ideal for small wires. U.L. listed.

Stock # Size Rolls/box
THM10307.....3/4" x 44 ft.10
THM06143.....3/4" x 66 ft.10

Imported Plastic Black Tape

An inexpensive tape for taping rope ends. Each roll of tape measures 3/4" x 60'. There are 10 rolls per sleeve and 250 rolls per case.

Stock # Description
MNC121960Plastic Tape



SPONGEX FLOATS

Made of expanded polyvinyl chloride, a broad range of shapes & sizes. Floats are resistant to sunlight, oil, gasoline, saltwater, & abrasion.

SPXCB5 Bullet Nose Buoy

Measures 5" x 11" with a 3/4" diameter hole.
Average buoyancy 6 lbs.- 8 oz.
Gold, Red, Orange, White, & Yellow. Packed 40 per carton.

Stock #	Color	Hole Color
SPX-CB5 G.....	Float 5" x 11" x 3/4"	Gold
SPX-CB5 R.....	Float 5" x 11" x 3/4"	Red.
SPX-CB5 OR.....	Float 5" x 11" x 3/4"	Orange
SPX-CB5 W.....	Float 5" x 11" x 3/4"	White
SPX-CB5 Y.....	Float 5" x 11" x 3/4"	Yellow



CB6 Bullet Nose Buoy

- Measures 6" x 14" with a 1" diameter hole.
- Average buoyancy 10 lbs.10 oz. Crab Buoy.
- Red, Orange, White, & Yellow. Packed-25 per/ carton.

Stock #	Description	Hole Color
SPX-CB6 R.....	Float 6"x 14"x 1"	Red
SPX-CB6 OR.....	Float 6"x 14"x 1"	Orange
SPX-CB6 W.....	Float 6"x 14"x 1"	White
SPX-CB6 Y.....	Float 6"x 14"x 1"	Yellow



CP7 Buoy, Tapered End

- Measures 7" x 14" with a 1" diameter hole.
- Average buoyancy 16 lbs.- 12 oz.
- White, Orange & Yellow. Packed 18 per carton.

Stock #	Description	Hole Color
SPX-CP7 OR.....	Float 7"x 14"x 1"	Orange
SPX-CP7 W.....	Float 7"x 14"x 1"	White
SPX-CP7 Y.....	Float 7"x 14"x 1"	Yellow



LP8 Spongex Buoy

- Measures 8" x 15" with a 1" diameter hole.
- Average buoyancy 18 lbs.
- Gold, Red, White, Orange, & Yellow.
- Packed 16 per carton.

Stock #	Color	Hole Color
SPX-LP8 G.....	Float 8" x 15" x 1"	Gold
SPX-LP8 R.....	Float 8" x 15" x 1"	Red
SPX-LP8 OR.....	Float 8" x 15" x 1"	Orange
SPX-LP8 W.....	Float 8" x 15" x 1"	White
SPX-LP8 Y.....	Float 8" x 15" x 1"	Yellow



LP9 Buoy

- Measures 9" x 16" with a 1" diameter hole
- Average buoyancy 28 lbs.
- White, Orange, & Gold. Packed 12 per carton.

Stock #	Color	Hole Color
SPX-LP9 G.....	Float 9" x 16" x 1"	Gold.....Ea
SPX-LP9 OR.....	Float 9" x 16" x 1"	Orange.....Ea
SPX-LP9 W.....	Float 9" x 16" x 1"	White.....Ea



Inner Tube Rubber Bands

Cut from truck inner tubes.
Used in conjunction with crab pot door hooks.
3/4" wide, two lengths.

Stock #	Description
ECL-LGRB.....	Large
ECL-SMRB.....	Small



Door Rubber

Used in conjunction with crab pot door hooks.
Made from door / tanner board rubber.
3/4" wide, measures 50 ea. per bag.

Stock #	Description
PUKRB50.....	Crab Door Rubber



Victorinox wavy blade gear/deck knife

This is the most popular knife we carry.
Used on decks of many vessels fishing in the North Pacific.
Small, sharp convenient. Use a sheath with this very sharp knife.
Stock # FOR40509

See knife section for LOTS more knives

Knife Sheath & Belt

Sheath for 881W

Heavy nylon web construction. Holds both the black and red handled serrated knives (881W and 882WR). Available in assorted colors, primarily black.

Stock #	Description
JLMSHEATH	

Belt

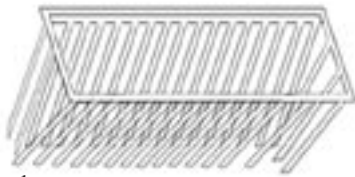
This is a multi purpose adjustable utility belt designed specifically for the Hemi Sheath, but is commonly used for holding other sheaths, lights, and utility pouches. Available in assorted colors, primarily black.

Stock #	Description
JLMBELTNE	



Crab





Neptune Cod Triggers

Modify crab pots for catching cod.

35" x 9". 10/per box. 39 lb. box.

Stock #	Style
NTTCT	Neptune Cod Trigger

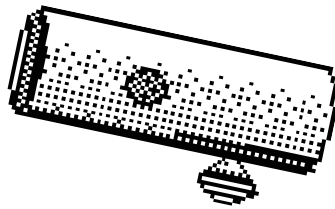
Hilty Cod Triggers

Stock #	Style
HIL9X18	9 X 18
HIL9X27	9 X 27
HIL9X27FLEX	9 X 27 with Excluder
HIL9X36	9 X 36
HIL9X36FLEX	9 X 36 with Excluder
HIL9X9	9 X 9

Rope Burner Tips

Machined aluminum.

Stock #
HMITIP



Nylon Ties

Black nylon construction. Heavy-duty.

Stock #	Size
SPT8HD	8"
SPT14.5HD	14.5"

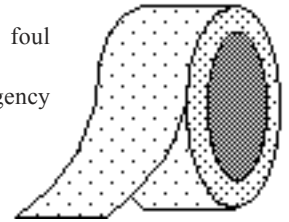


Crab

3M Reflective Tape

Pressure sensitive reflective tape. Can be applied to virtually any surface:

- Life jackets, rafts, immersion suits & foul weather gear.
- Enormously helpful in locating emergency victims at night.
- Sold by the roll or by the foot. Each roll measures 2" X 150'.

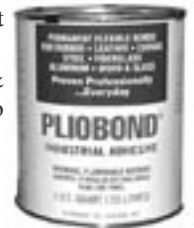


Stock #	Description
THM56643	Reflective tape

PLIOBOND®

Pliobond provides permanent, flexible bonding.

- Can be brushed, spread or roller coated.
- Will not get hard or brittle with age & resists most acids, oil, gasoline, grease & water.
- Some applications include: Seaming, splicing & bonding of gaskets, rubber matting, belts & hose to rubber, wood, metal, plastics, glass, & fabrics.



Stock #	Description
RUCPBC-20	#20 1/2 PINT
RUCPC220	#20 PINT
RUCPC320	#20 QUART
RUCPC420	#20 GAL

3M Marine 5200 Adhesive/Sealant

High-performance polyurethane adhesive/sealant becomes:

- Tack free in 48 hours, completely cures in 5-7 days with no shrinkage.
- Stays flexible, allows for structural movement.
- Easy to apply with manual caulking gun.



Stock #	Color	Size	Tubes/case
Tubes:			
THM05203	White	3 oz.	12
THM05205	Black	3 oz.	12

Cartridges:			
THM06500	White		12
THM06501	Tan		12
THM06502	Mahogany		12
THM06504	Black		12

Life-Calk®

- Twists • Bends • Expands • Compresses •

Stock #	Size	Color
BTL1030	Tube	White
BTL1031	Tube	Black
BTL1032	Tube	Mahogany
BTL1037	Tube	Teak Brown
BTL1033	Cart.	White
BTL1034	Cart.	Black
BTL1035	Cart.	Mahogany
BTL1036	Cart.	Teak Brown





C Link / Split Link

Galvanized

Stock #	Size	SWL (tons)
SFEBDS10GAL	3/8"	0.1
SFEBDS12GA	1/2"	0.2
SFEBDS16GA	5/8"	0.3

Stainless

Stock #	Size	SWL (tons)
SFEBDS10SSL	3/8"	0.2.....Long
SFEBDS12SS	1/2"	0.3



C-Links

Stock #	Size	Description
HMI516CL	5/16"	Stainless Steel
FIFCLNK3/8MS	3/8"	Mild Steel
FIFCLNK3/8SS	3/8"	Stainless Steel
HMI38CL	3/8"	Stainless Steel
FIFCLNK1/2MS	1/2"	Mild Steel
FIFCLNK1/2SS	1/2"	Stainless Steel
FIFCLNK5/8MS	5/8"	Mild Steel
FIFCLNK3/4MS	3/4"	Mild Steel



Heavy Duty SS Swivel -

Stainless steel swivel with bronze bushing.

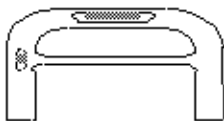
Stock #	Description
SFEBA304	Swivel SS Brnz Bush 4 Ton
SFEBA306	Swivel SS Brnz Bush 6 Ton



#72 Gangen - White

Stock #	Size
EVR96026	26" cut lengths in a bundle of 100.
EVR95072	2 lb. spool.
EVR95072-5	5 lb. spool.

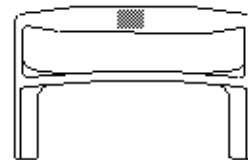
Crab Measurers - Available in plastic or aluminum.



ALUMINUM:

From Baywood.

Stock #	Size
BAYB-21.4	4"
BAYB-22.5	4.5"
BAYB-22.7	4.75"
BAYB-23.5	5.5"
BAYB-24	6"
BAYB-24.25	6.25"
BAYB-24.50	6.5"
BAYB-25	7"



PLASTIC:

From Loomis

Stock #	Size
LPCCM4	4"
LPCCM51/2	5-1/2"
LPCCM6	6"
LPCCM61/2	6-1/2"
LPCCM7	7"
LPCCM71/2	7-1/2"



Polyform's 'A' Series Highliner

The only one-piece reinforced rope-hold buoys on the market today. They are widely used in commercial fishing, offshore oil research, commercial marine, recreational marine and sportfishing.

Eight sizes, from 9 inches diameter to 41 inches in diameter.

- Buoyancy from 13 to 1345 lbs.

Color choices: High visibility fluorescent colors for commercial fishing

Classic White & Polyform Blue for the recreational boater.

Throughout the world more people rely on the A series than all other buoys combined.

Put your trust in Polyform's most versatile & popular product.

**Blue, Green,
Light Orange,
Orange, Red,
Saturn Yellow,
White,**



A Series Buoys

Proven in commercial marine industry, earned reputation for strength & dependability.

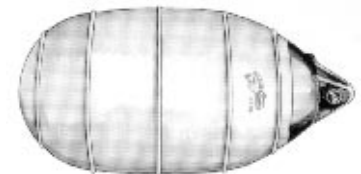
- Ropeholds & valves built to withstand the most severe conditions.
- Ropehold with improved strength & durability: A-1 thru A-7.
- Dual valve inflation/deflation system for A-5, A-6 & A-7.
- Eight sizes: 9" dia. to 41.4" dia.
- **7 Brilliant Colors:**
Blue, Green, Orange, Red, Yellow, White & Saturn Yellow (a yellow-green color).
- Buoyancy from 13 to 1345 lbs. A Series fits any need.

Stock #	Dia. x Length	Circum.	Eye Dia.	Buoyancy	Units / ctn
POL-AO	9" x 11.5"	28.3	0.6	13 Lbs.	20
POL-A1	11.5" x 14.5"	36.1	1	29 Lbs.	10
POL-A2	15.5" x 19.5"	48.7	1.12	68 Lbs.	10
POL-A3	18.5" x 23"	58.1	1.12	121 Lbs.	10
POL-A4	21.5" x 28"	67.5	1.12	187 Lbs.	10
POL-A5	27.5" x 30"	86.4	1.25	396 Lbs.	5
POL-A6	34.0" x 46.5"	106.8	1.5	792 Lbs.	3
POL-A7	41.4" x 54.4"	130.0	2	1345Lbs.	2

Polyform 'LD' Series (Low Drag)

Less surface drag means faster, safer pickups - & less strain on both crew & gear.

- Less than 20% of the drag of standard buoy.
- The patent pending rib design & unique shape allow the buoy to skip along water surface, rather than digging in as standard round buoys do.
- Independent testing confirms the LD Series created, only 20% of drag at retrieval speeds of 3 to 6 knots.



LD Series - Buoy

Most used low drag buoy in the world!

Unique shape makes pot retrieval easier. Excellent choice for offshore fishing.

- LD creates only 20% of the drag of a standard round buoy. Great rafting fender.
- Featured buoy of "Deadliest Catch" series on the Discovery Channel.
- **7 Brilliant Colors:**
Blue, Green, Orange, Red, Yellow, White & Saturn Yellow (a yellow-green color).
- Dramatically reduces gear loss in most extreme conditions.

Stock #	Dia. x Length	Circum.	Eye Dia.	Buoyancy
POL-LD1	8.5" x 18.5"	27.0	1.0	28.6 Lbs.
POL-LD2	12.0" x 23"	37.7	1.0	68 Lbs.
POL-LD3	14.3" x 30"	44.8	1.0	121 Lbs.

